

PRODUCT GUIDE



INDEX



1	SYSTEMS OVERVIEW	3
2	BALUSTER RAILING	6
3	VERTICAL CABLE RAILING	10
4	HORIZONTAL CABLE RAILING	14
5	GLASS RAILING	21
6	ALUMINUM POST SYSTEM	25
7	HARDWARE	34
8	ADA HANDRAIL	42
9	FENCE SYSTEM	48
10	SCREEN RAIL	52
11	ALUMINUM FRAMING SYSTEMS	54
12	ADJUSTABLE HANDRAIL	56
13	PROJECT PLANNERS	57
14	ADDITIONAL INFORMATION	65

ULTRALOX[®] RAILING, FENCING AND DECKING SYSTEMS



BALUSTER RAILING

Page 6



VERTICAL CABLE RAILING

Page 10



HORIZONTAL CABLE RAILING

Page 14



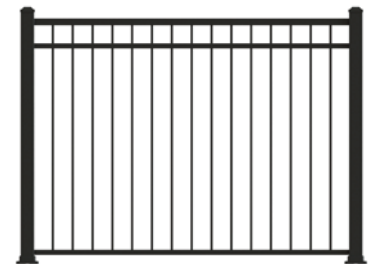
GLASS RAILING

Page 21



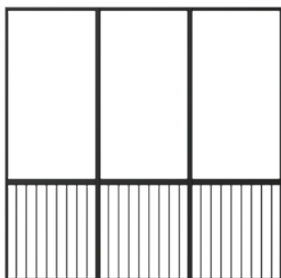
ADA HANDRAIL

Page 42



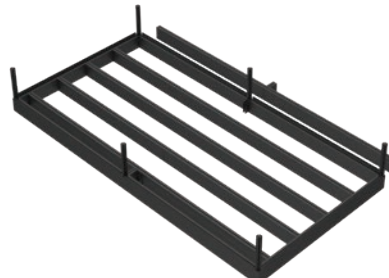
ALUMINUM FENCE

Page 48



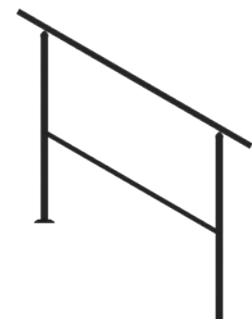
SCREEN RAIL SYSTEM

Page 52



ALUMINUM FRAMING SYSTEMS

Page 54



ADJUSTABLE HANDRAIL

Page 56

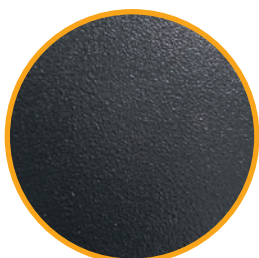


PREMIUM POWDER COATED **ALUMINUM RAILING**

Ultralox Interlocking® products are powder-coated with AkzoNobel Interpon D2000 Super Polyester Architectural Powder Coating only by approved Interpon D applicators with fully-operational Quality Management Systems.

COLOR OPTIONS

POWDER COATED COLOR OPTIONS



BLACK



WHITE



BRONZE

MIXED COLOR OPTIONS



PIANO RAIL®

White with black infill



TUXEDO RAIL®

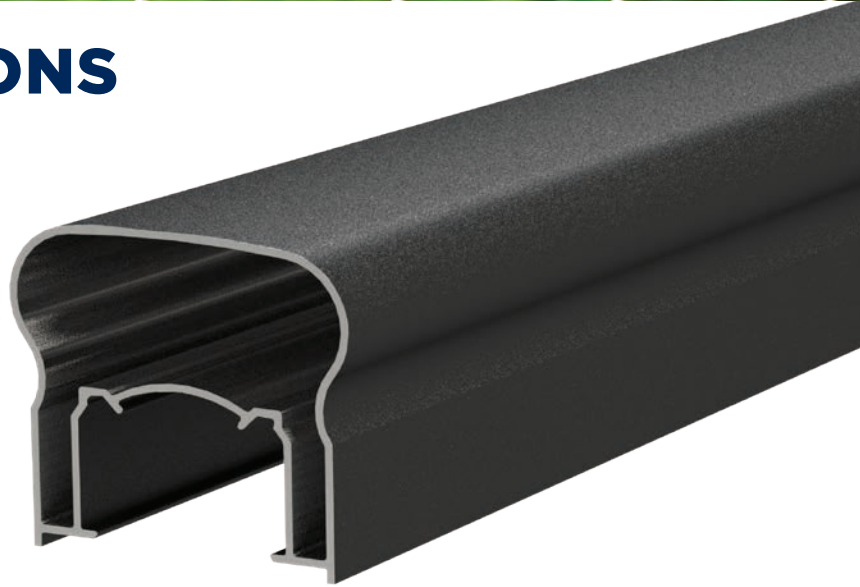
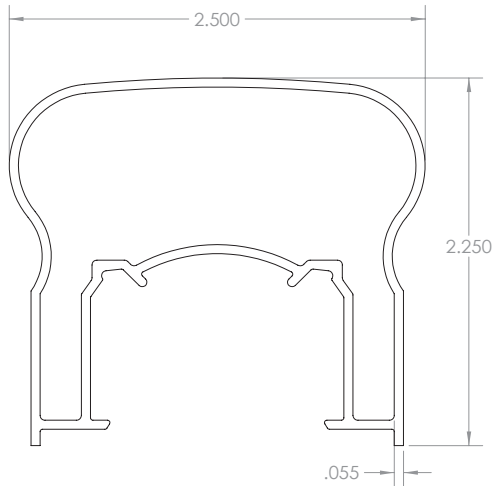
Black with white infill

COASTAL TOP COATING

Products located 1 mile or less from any coastline shall qualify for a 10-year Limited Warranty if an AkzoNobel Interpon 700 polyester epoxy primer (EL015Q) is applied prior to the application of the above Interpon D2000 Super Polyester Architectural Powder Coating. AkzoNobel Interpon 700 polyester epoxy primer (EL015Q) powder coating shall only be applied by approved Interpon D applicators.



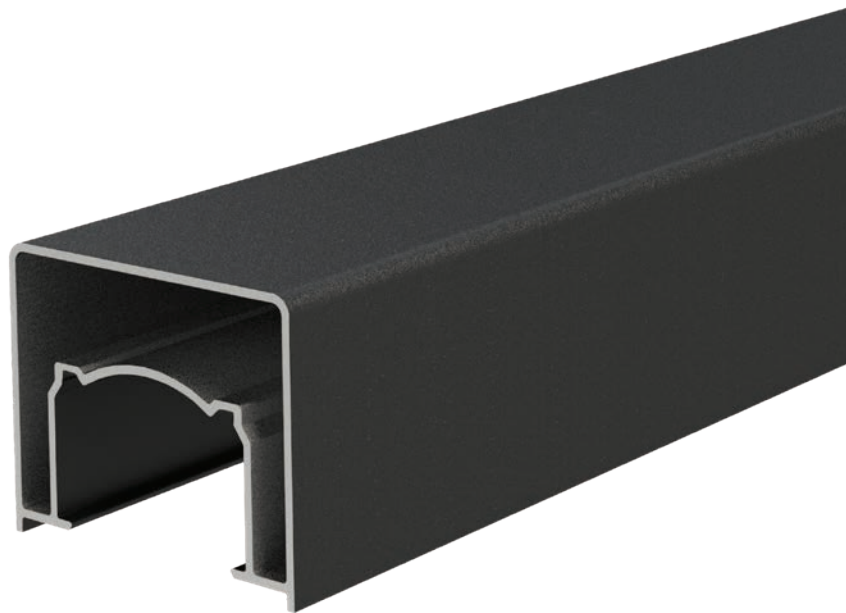
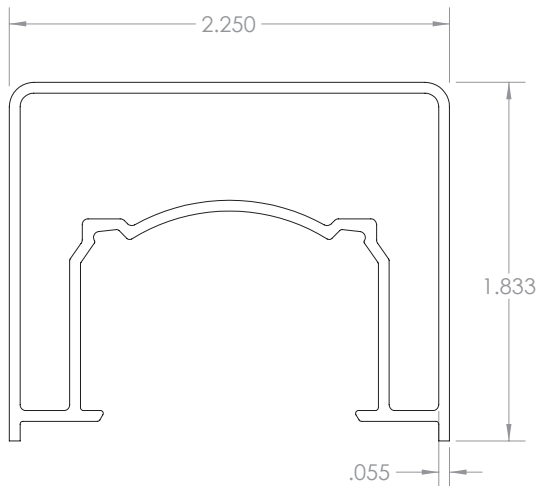
TOP RAIL OPTIONS



VICTORIAN TOP RAIL PROFILE

Part Number	Dimension
VT393100	2.50 x 2.25

● B=Black ● W=White ● Z=Bronze



ALTA TOP RAIL PROFILE

Part Number	Dimension
AL893100	2.25 x 1.833

● B=Black ● W=White ● Z=Bronze



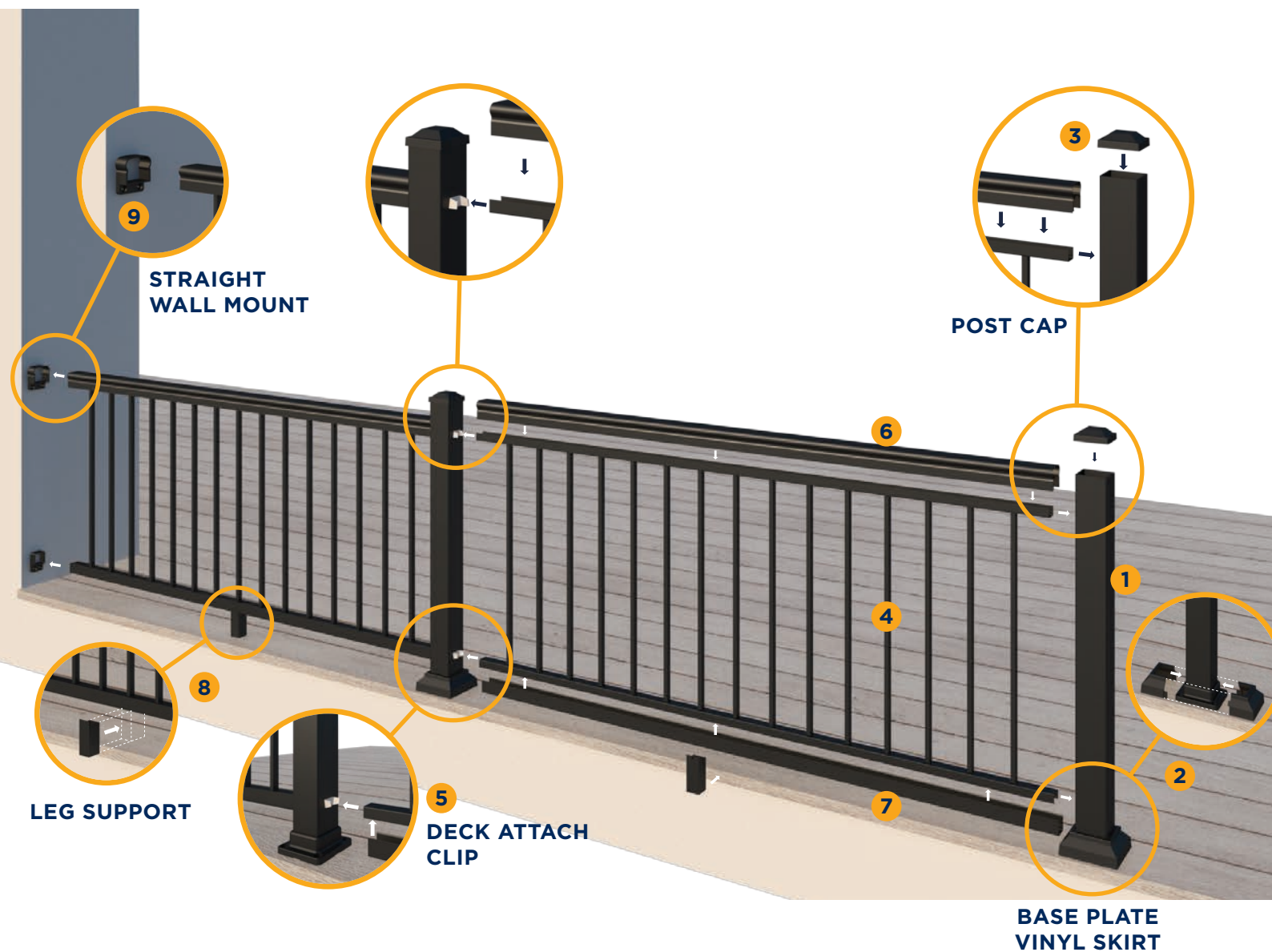
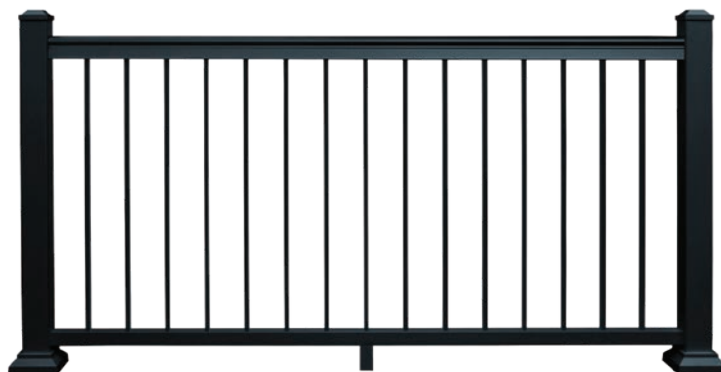
BALUSTER RAILING 2

When it comes to choosing the perfect railing for your home, rely on the gold standard. Our aluminum baluster railing is where it all started. Known for its beautiful low-profile design, our baluster railing allows you to enjoy more of the view you love while giving you the security and safety you need.



BALUSTER RAILING SYSTEM

- 1 POST ASSEMBLY
- 2 BASE PLATE VINYL SKIRT
- 3 POST CAP
- 4 ASSEMBLED BALUSTER PANEL
- 5 STRAIGHT CLIP BRACKET
- 6 TOP RAIL SNAP
- 7 BOTTOM SNAP
- 8 LEG SUPPORT
- 9 WALL MOUNT



BALUSTER PANEL KIT

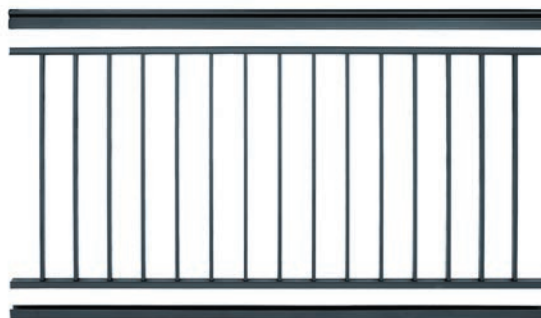
POST-TO-POST PANEL KIT

VICTORIAN TOP RAIL

Panel	Deck Railing	Stair Railing
6ft x 36in	HR362306	HS352306
6ft x 42in	HR362406	HS352406
8ft x 36in	HR362308	HS352308
8ft x 42in	HR362408	HS352408

ALTA TOP RAIL

Panel	Deck Railing	Stair Railing
6ft x 36in	HR862306	HS852306
6ft x 42in	HR862406	HS852406
8ft x 36in	HR862308	HS852308
8ft x 42in	HR862408	HS852408



CONTINUOUS PANEL KIT

Panel	Deck Railing	Stair Railing
6ft x 36in	HR062306	HS052306
6ft x 42in	HR062406	HS052406
8ft x 36in	HR062308	HS052308
8ft x 42in	HR062408	HS052408

● B=Black ● W=White ● Z=Bronze
Piano & Tuxedo available special order only.

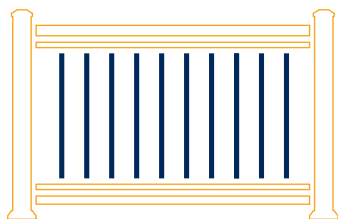


NOTES:

Continuous Top Rail Snaps are ordered SEPARATELY.
 Kits can be purchased through Ultralox®.

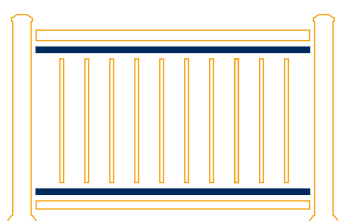


BALUSTER PANEL INDIVIDUAL PARTS



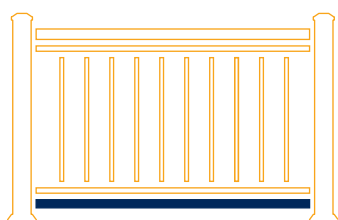
ALUMINUM NOTCHED PICKETS

	Deck Panel	Stair panel	Dimension
36in	NP063136	NP053136	0.75 x 0.50
42in	NP063142	NP053142	0.75 x 0.50



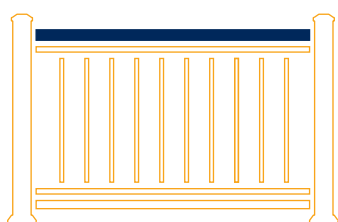
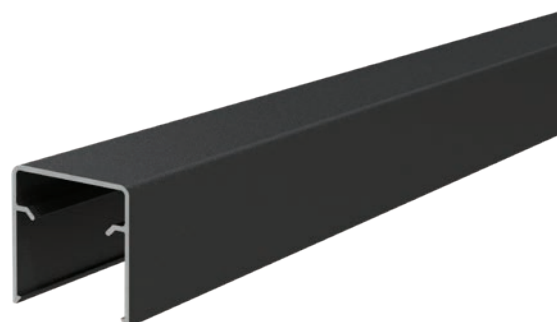
H-CHANNELS

	Deck Panel	Stair Panel	Dimension
6ft	NH063106	NS053106	1.38 x 0.968
8ft	NH063108	NS053108	1.38 x 0.968



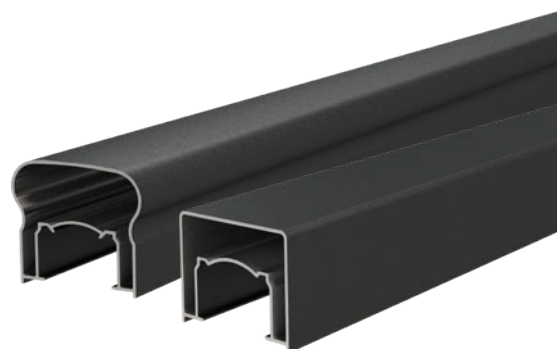
BOTTOM RAIL SNAPS

	Part Number	Dimension
6ft	SH093106	1.50 x 1.50
8ft	SH093108	1.50 x 1.50



TOP RAIL SNAPS

	Victorian	Alta	See Page 7 Actual Length
6ft	VT393106	AL893106	69.43
8ft	VT393108	AL893108	91.31
18ft	VT393118	AL893118	216



DRINK RAIL KITS

Part Number: **BR094203**

● BK=Black ● WK=White ● ZK=Bronze

NOTE:

For the Drink Rail System, an additional Bottom Rail Snap is used as the Top Rail Snap which supports the Drink Rail and brackets. Order a Continuous Top Rail panel (no top rail snap), an additional Bottom Rail Snap and a Drink Rail Kit.





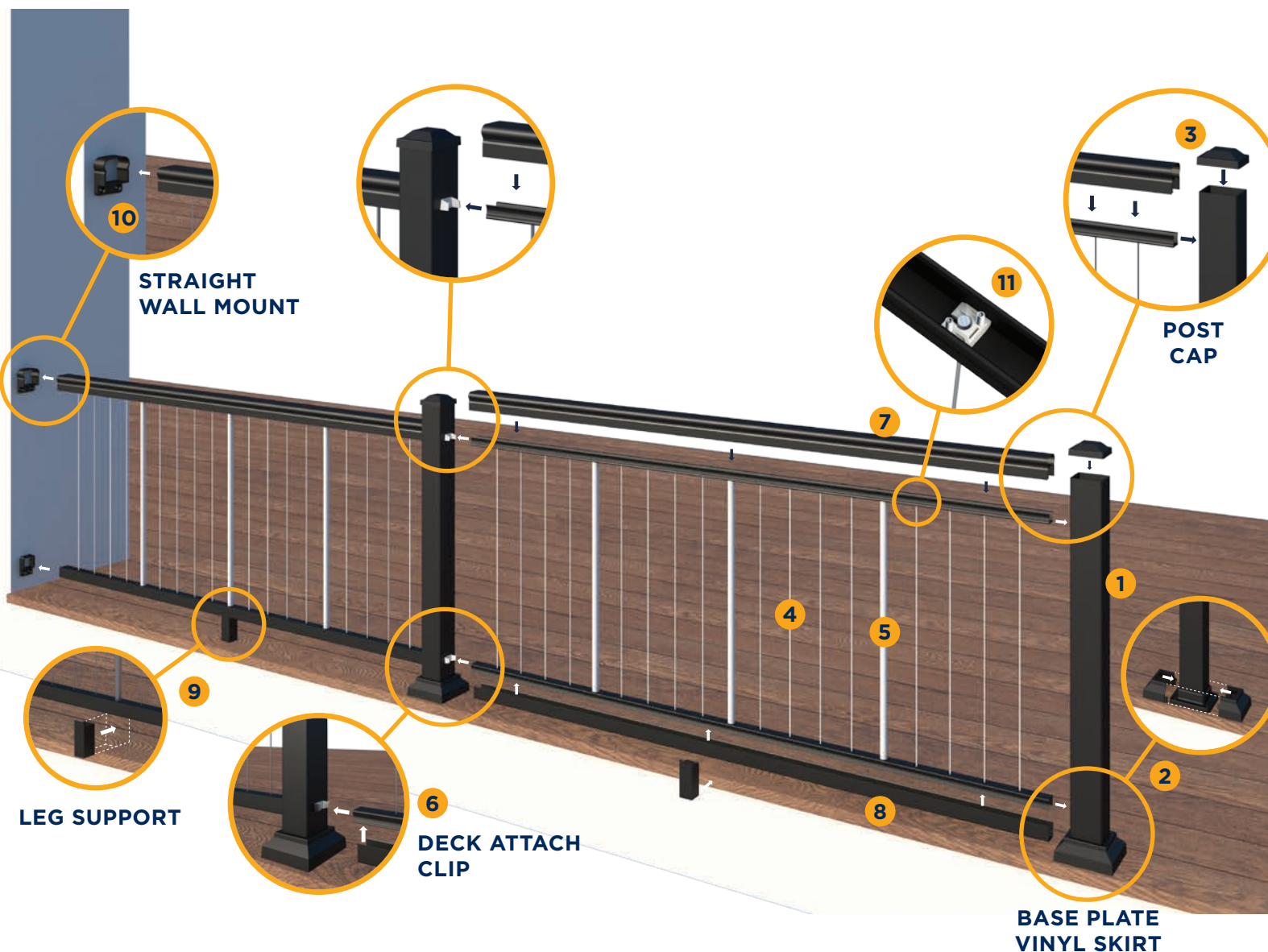
3 VERTICAL CABLE RAILING



Ultralox® Vertical Cable Railing is a revolutionary system with pre-installed cables and easy-to-adjust Tensioning Blocks with set screws (patent pending). Panels come in convenient kits for easy planning and ordering. The system features hidden hardware and a beautiful top rail of your choice.

VERTICAL CABLE RAILING SYSTEM

- 1 POST ASSEMBLY
- 2 BASE PLATE VINYL SKIRT
- 3 POST CAP
- 4 VERTICAL CABLE
- 5 STAINLESS STEEL STIFFENER
- 6 STRAIGHT CLIP BRACKET
- 7 TOP RAIL SNAP
- 8 BOTTOM SNAP
- 9 LEG SUPPORT
- 10 CABLE TENSION BLOCK



VERTICAL CABLE PANEL KITS



VICTORIAN TOP RAIL

Panel	Deck Railing	Stair Railing
6ft x 36in	VC662306	VC652306
6ft x 42in	VC662406	VC652406
8ft x 36in	VC662308	
8ft x 42in	VC662408	

ALTA TOP RAIL

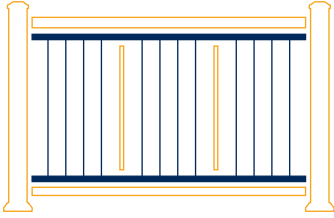
Panel	Deck Railing	Stair Railing
6ft x 36in	VC162306	VC152306
6ft x 42in	VC162406	VC152406
8ft x 36in	VC162308	
8ft x 42in	VC162408	

● B=Black ● W=White ● Z=Bronze

3in Posts are required to reach 6ft and 8ft lengths on center.
System uses standard 3in aluminum posts.
Top Rails are included. Cables are pre-strung.
Can be purchased through Ultralox®.

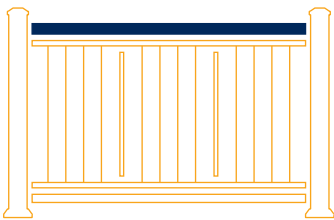


VERTICAL CABLE INDIVIDUAL PARTS



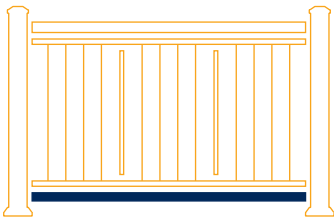
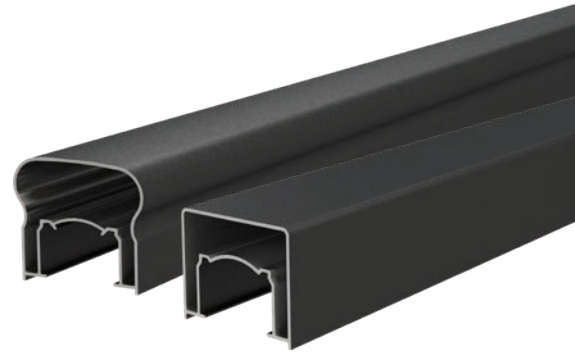
PRE-STRUNG VERTICAL CABLE PANEL

	Deck	Stair
6ft x 36in	VC088306	VC058306
6ft x 42in	VC088406	VC058406
8ft x 36in	VC088308	
8ft x 42in	VC088408	



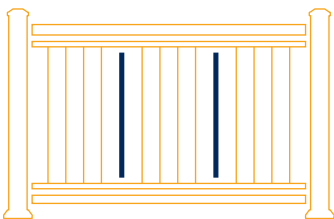
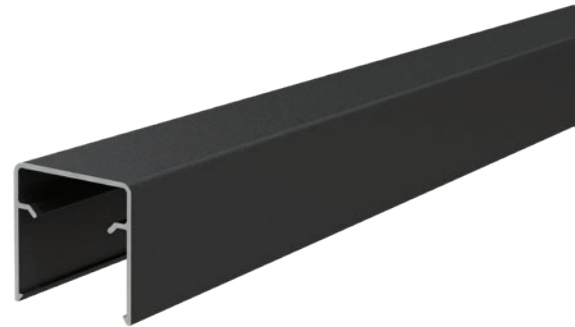
TOP RAIL SNAP

	Victorian	Alta	See Page 7 Actual Length
6ft	VT393106	AL893106	69.43
8ft	VT393108	AL893108	91.31
18ft	VT393118	AL893118	216



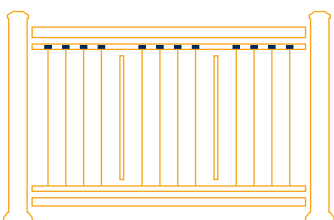
BOTTOM RAIL SNAP

	Part Number	Dimension
6ft	SH093106	1.50 x 1.50
8ft	SH093108	1.50 x 1.50



VERTICAL CABLE STIFFENER

	Part Number	Actual Length
36in	RP064136	30.375in
42in	RP064142	36.00in



TENSION BLOCK WITH SET SCREWS

	Part Number	Dimension
	CRO28101	0.868 x 0.99 x 0.485

● B=Black ● W=White ● Z=Bronze





4 HORIZONTAL CABLE RAILING



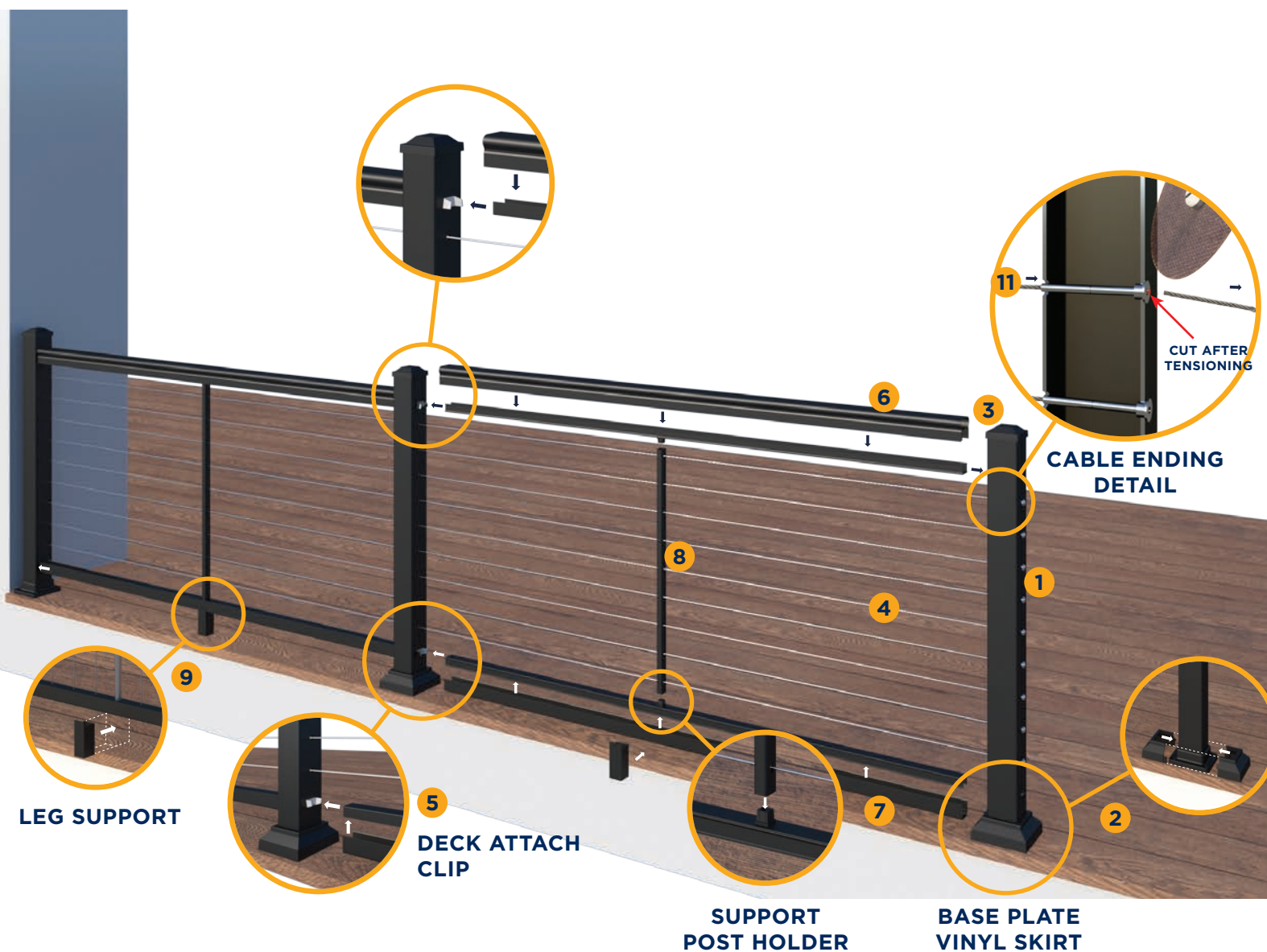
Don't sacrifice safety for the best view - now you can have both with our easy to install horizontal cable railing kits. Help your backyard views stay open and clear as the low-maintenance stainless steel wire infill allows you to relax and enjoy your outdoor living with little maintenance.

HORIZONTAL CABLE FULL FRAME SYSTEM

- 1 POST ASSEMBLY
- 2 BASE PLATE VINYL SKIRT
- 3 POST CAP
- 4 HORIZONTAL CABLE
- 5 STRAIGHT CLIP BRACKET
- 6 TOP RAIL SNAP
- 7 BOTTOM SNAP
- 8 INTERMEDIATE POST
- 9 LEG SUPPORT



**Wall Mount cannot be used with Horizontal Railing System*

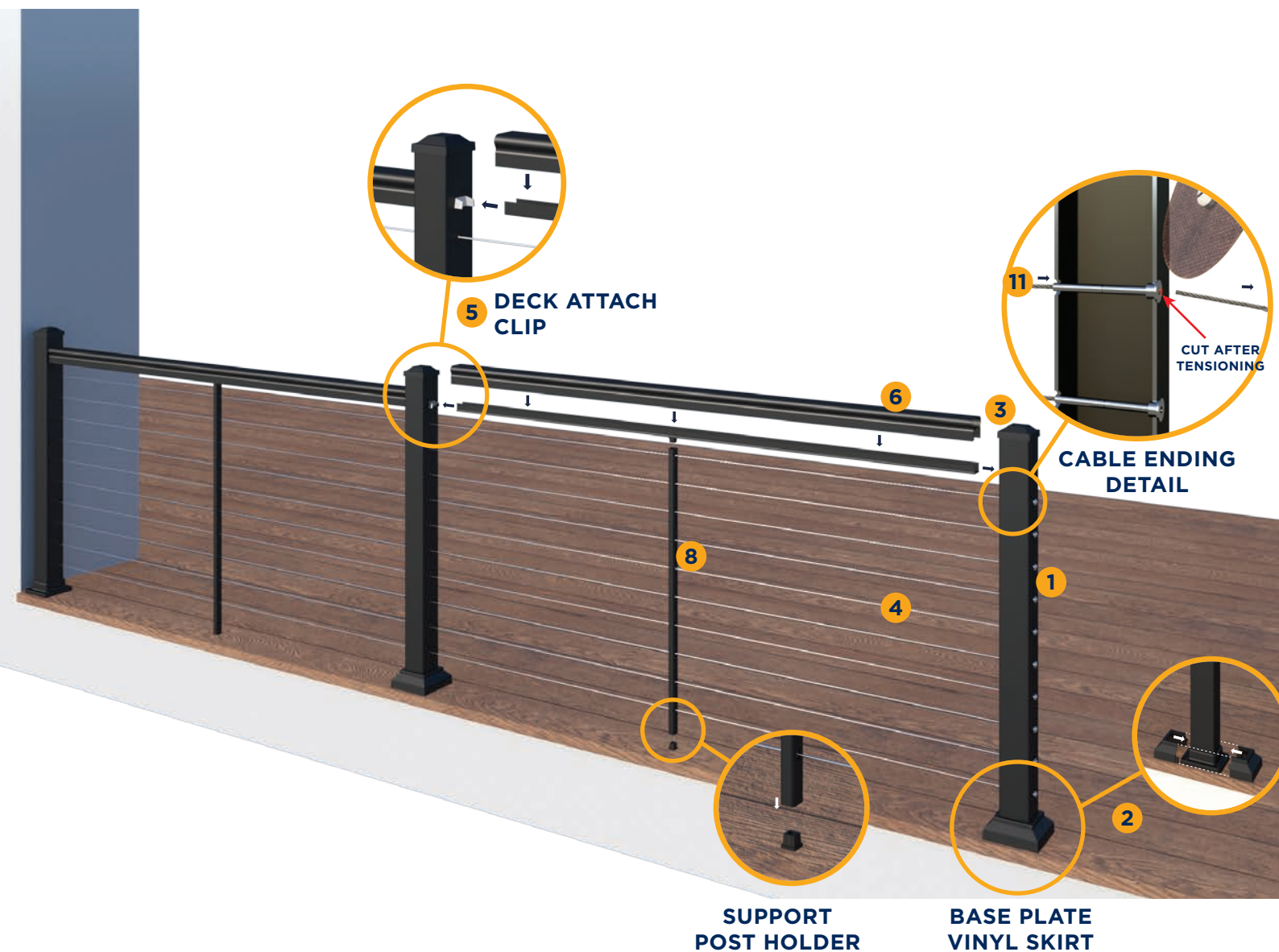


HORIZONTAL CABLE TOP RAIL ONLY SYSTEM

- 1 POST ASSEMBLY
- 2 BASE PLATE VINYL SKIRT
- 3 POST CAP
- 4 HORIZONTAL CABLE
- 5 STRAIGHT CLIP BRACKET
- 6 TOP RAIL SNAP
- 7 BOTTOM SNAP
- 8 INTERMEDIATE POST



**Wall Mount cannot be used with Horizontal Railing System*



HORIZONTAL CABLE FULL FRAME PANEL KITS



VICTORIAN TOP RAIL

Panel	Deck Railing	Stair Railing
6ft x 36in/42in	TF661306	TF651306
8ft x 36in/42in	TF661308	TF651308

ALTA TOP RAIL

Panel	Deck Railing	Stair Railing
6ft x 36in/42in	TF161306	TF151306
8ft x 36in/42in	TF161308	TF151308

● B=Black ● W=White ● Z=Bronze

3in Posts are required to reach 6ft and 8ft lengths on center.
36in Full Frame systems require 9 horizontal cables.
42in Full Frame systems require 11 horizontal cables.
Top Rail Snaps are included.

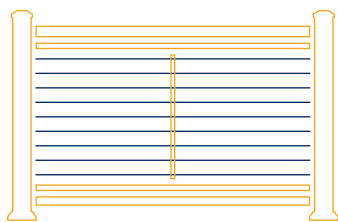


NOTES:

Horizontal Cable Aluminum Posts and Horizontal Cable Kits sold separately.
 Kits can be purchased through Ultralox®.



HORIZONTAL CABLE FULL FRAME PANEL INDIVIDUAL PARTS



HORIZONTAL CABLE KITS

	Part Number	Dimension
5ft to 60ft	CW60300	0.75 x 0.50

NOTES:

36in Panels Full Frame requires 9 horizontal cables.
42in Panels Full Frame requires 11 horizontal cables.
Available in 5ft to 60ft lengths in 5ft increments.
Choose from 2in or 3in posts for receiver fitting.

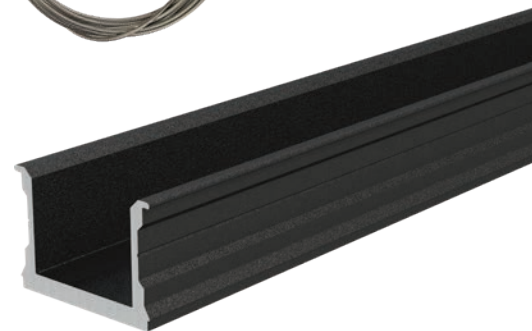


UNPUNCHED HEAVY WALL H-CHANNELS

	Part Number	Dimension
6ft	NC063106	1.38 x 0.968
8ft	NC063108	1.38 x 0.968

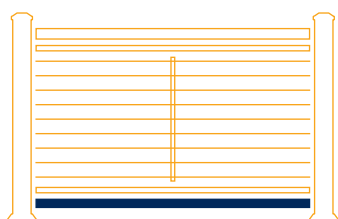
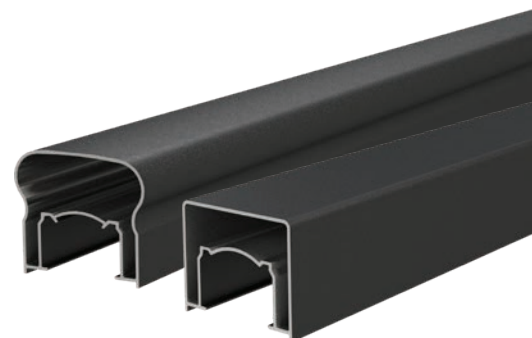
NOTE:

Horizontal Full Frame Panel require 2 Unpunched Heavy Wall H-Channels.



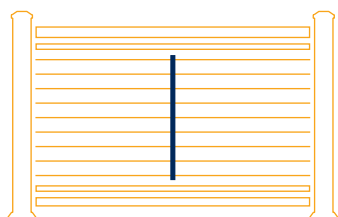
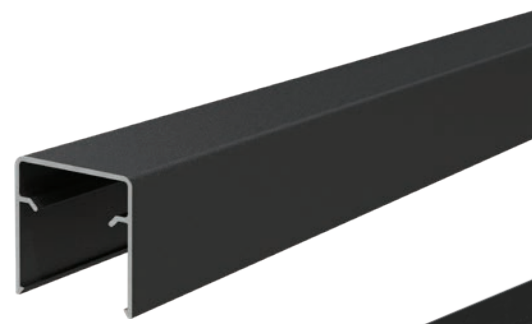
TOP RAIL SNAPS

			See Page 7
	Victorian	Alta	Actual Length
6ft	VT393106	AL893106	69.43
8ft	VT393108	AL893108	91.31
18ft	VT393118	AL893118	216



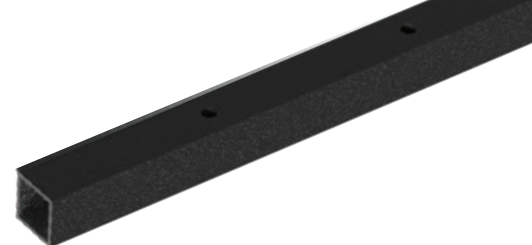
BOTTOM RAIL SNAPS

	Part Number	Dimension
6ft	SH093106	1.50 x 1.50
8ft	SH093108	1.50 x 1.50



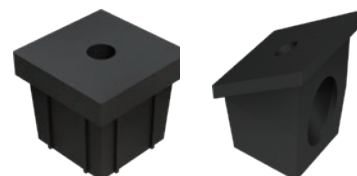
INTERMEDIATE POSTS

			See Page 7
	Deck Panel	Stair Panel	Dimension
36in	NP063500	NP063501	0.75 x 0.75
42in	NP063502	NP063503	0.75 x 0.75



INTERMEDIATE POST PLUGS

	Part Number	Dimension
Deck	CR004301	0.75 x 0.75 x 0.656
Stair	CR054301	0.75 x 0.75 x 1.016



● B=Black ● W=White ● Z=Bronze

HORIZONTAL CABLE TOP RAIL ONLY PANEL KITS



VICTORIAN TOP RAILS

Panel	Deck Railing	Stair Railing
6ft x 36in/42in	TR661306	TR651306
8ft x 36in/42in	TR661308	TR651308

● B=Black ● W=White ● Z=Bronze

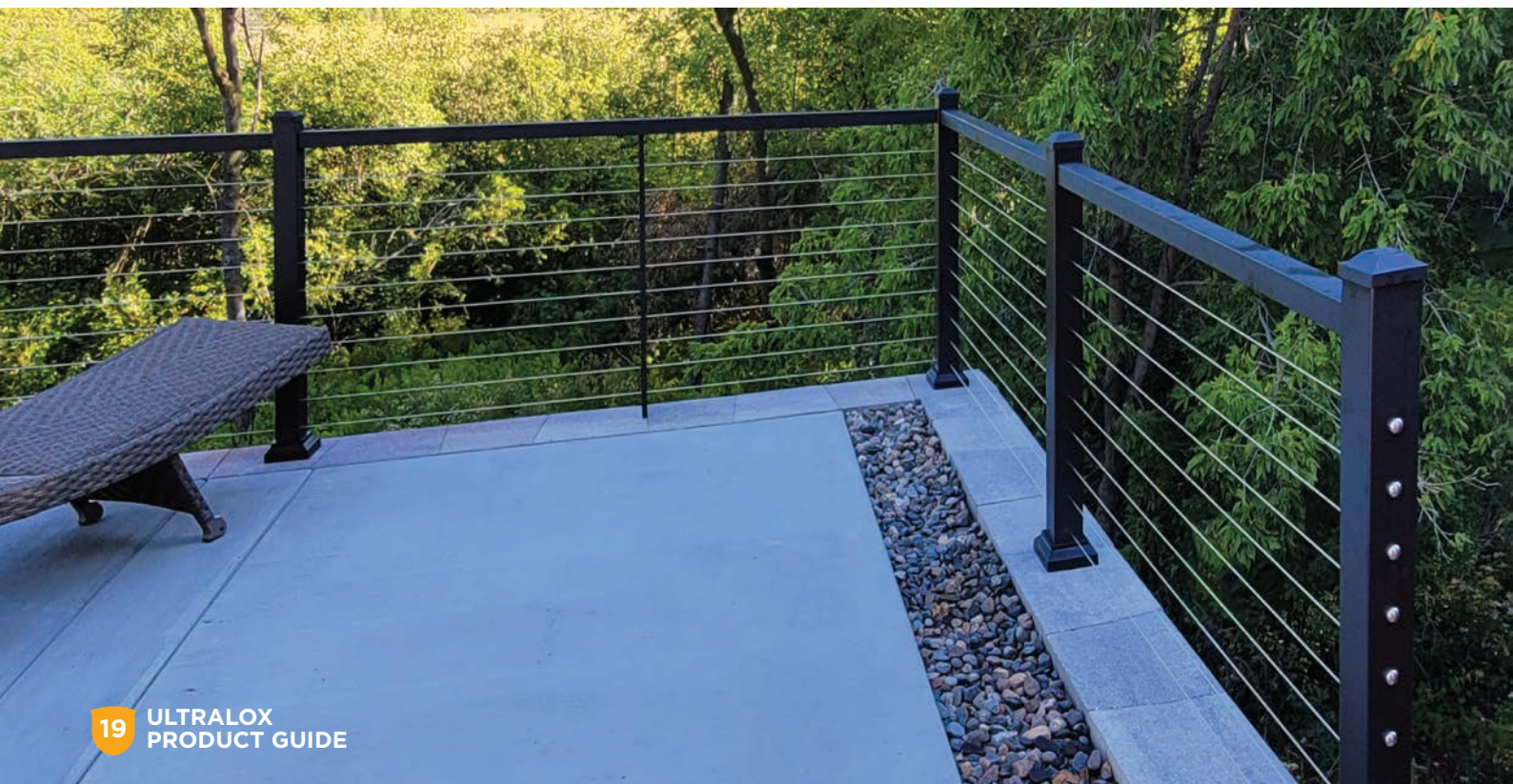
3in Posts are required to reach 6ft and 8ft lengths on center.
Horizontal Cable Top Rail Only Kits do not include Bottom Rails
36in Top Rail Only systems require 10 horizontal cables.
42in Top Rail Only systems require 12 horizontal cables.
Top Rail Snaps are included.

NOTES:

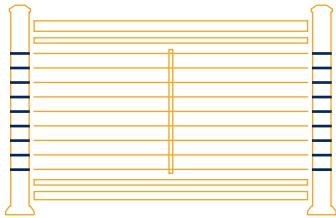
Horizontal Cable Aluminum Posts and Horizontal Cable Kits sold separately.
 Kits can be purchased through Ultralox®.

ALTA TOP RAILS

Panel	Deck Railing	Stair Railing
6ft x 36in/42in	TR161306	TR151306
6ft x 36in/42in	TR161308	TR151308



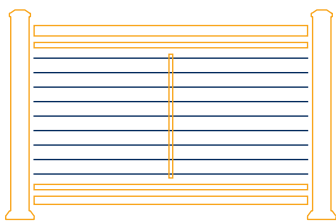
HORIZONTAL CABLE SWAGELESS SYSTEM



ULTRABITE® HORIZONTAL CABLE FITTING

	Part Number	Dimension
each	CR082303	3in

The swageless cable fittings are fast, easy, and reliable—simply push to lock in place. Use only with UltraLox 3in Cable Posts and 1/8in Bulk Cable.



1/8in BULK CABLE

	Part Number	Dimension
500ft	CR080205	0.125in x 500ft

2205 marine-grade stainless steel cable. Use with UltraBite® Horizontal Cable Fittings.



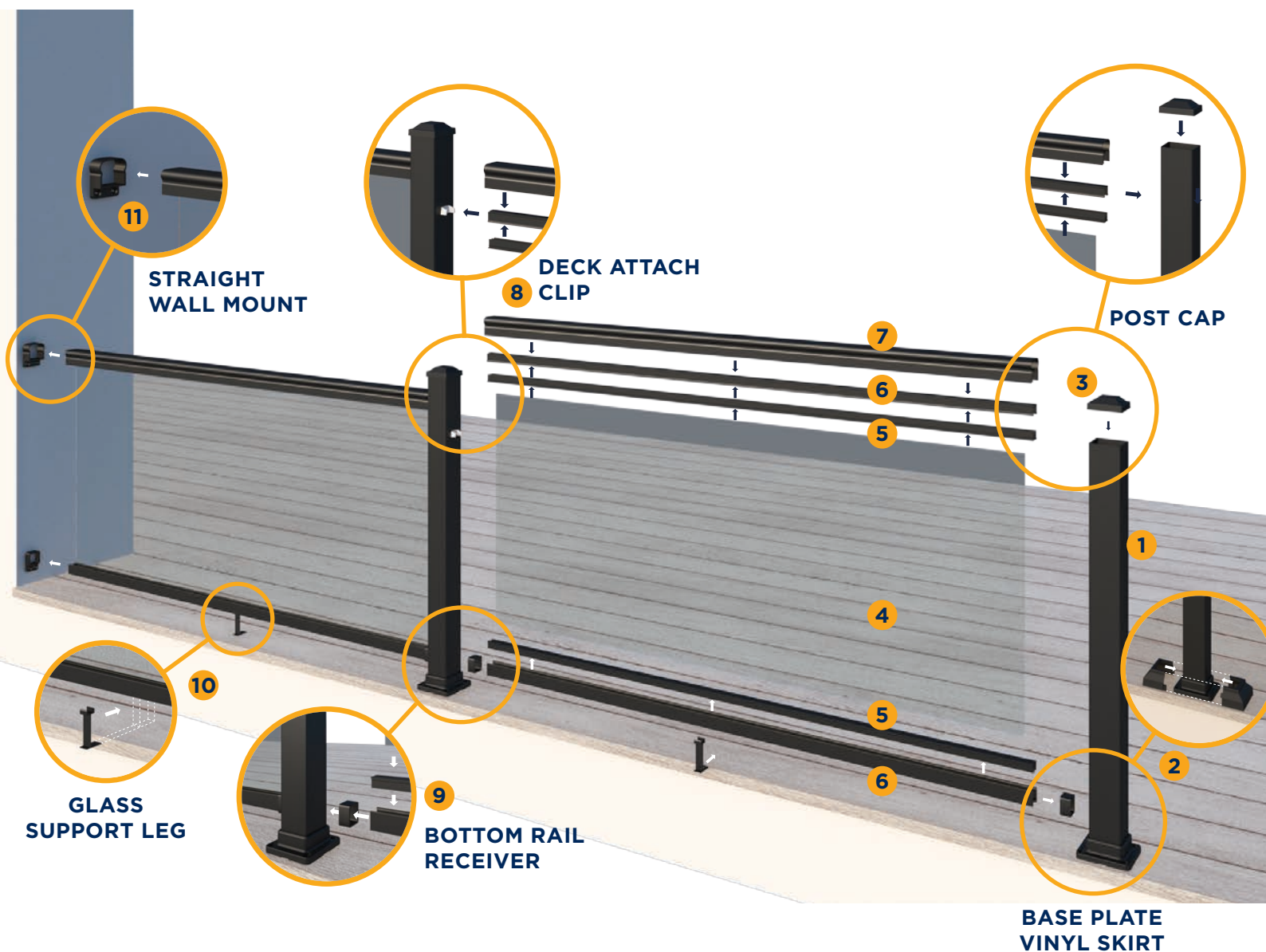


GLASS RAILING 5

With the Ultralox® quarter inch full tempered glass aluminum railing system, you get the safety of our commercial grade railing with a great view added in. You won't need to worry about the security of your glass with our strong, drop-in locking system - making our glass railing perfect for your outdoor space.

GLASS RAILING SYSTEM

- 1 POST ASSEMBLY
- 2 BASE PLATE VINYL SKIRT
- 3 POST CAP
- 4 1/4in TEMPERED GLASS PANEL
- 5 GLASS UPPER & LOWER CHANNEL INSERT
- 6 GLASS UPPER & LOWER CHANNEL
- 7 TOP RAIL SNAP
- 8 STRAIGHT CLIP BRACKET
- 9 BOTTOM RAIL RECEIVER
- 10 GLASS SUPPORT LEG
- 11 WALL MOUNT



GLASS RAILING PANEL RAIL SECTIONS



FULL GLASS PANEL RAIL SECTIONS

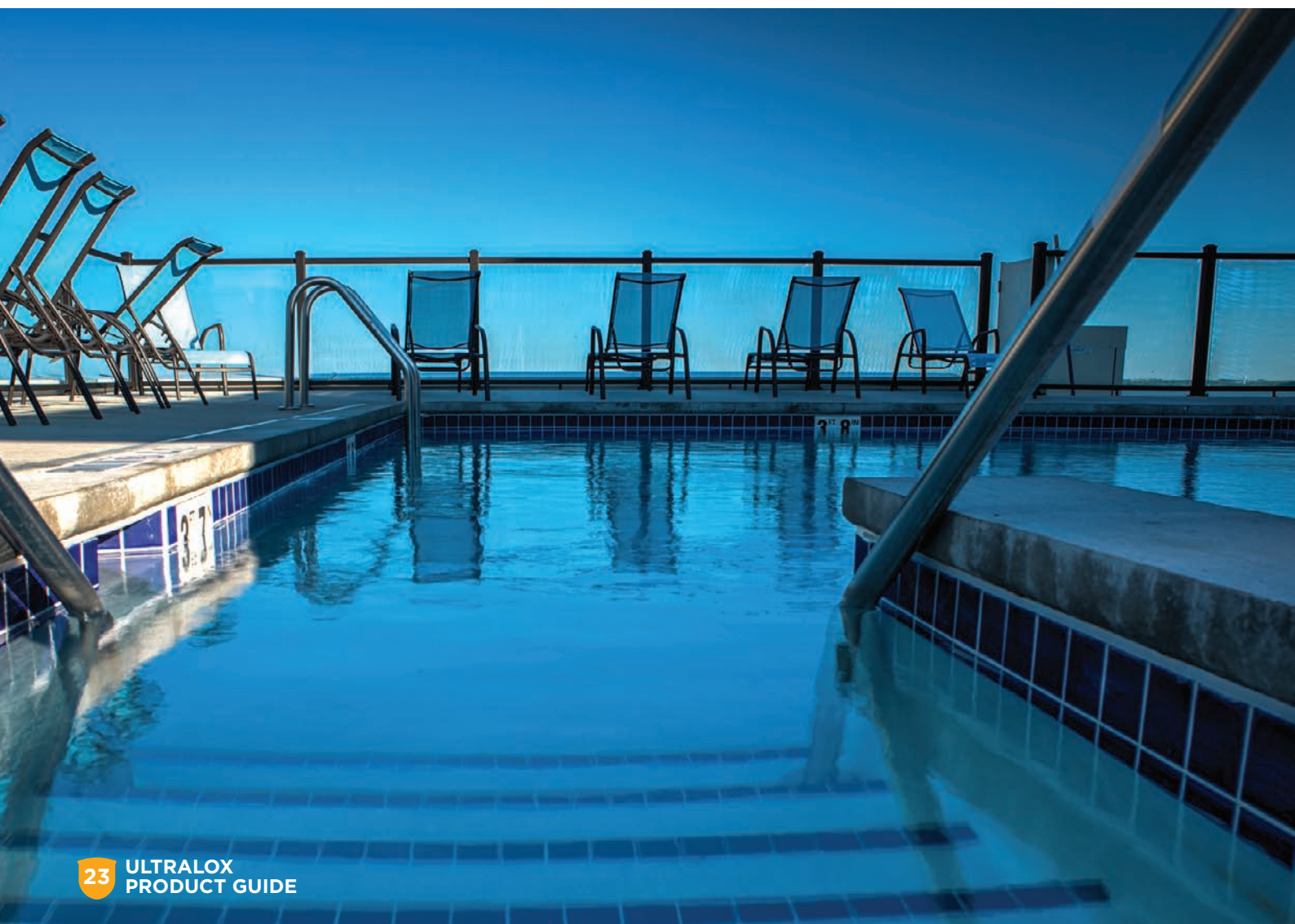
Panel	Stair Railing
6ft Full Panel Glass Rail Section	HG031206

● B=Black ● W=White ● Z=Bronze

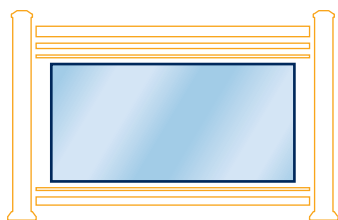


NOTES:

1/4in Tempered Glass Panels must be purchased from a local glass company.
 Top Rails are NOT included and must be purchased separately.
 Kits can be purchased through Ultralox®.

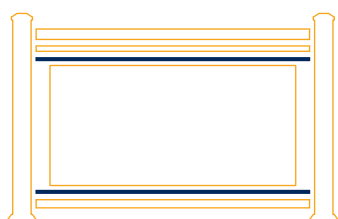


GLASS RAILING INDIVIDUAL PARTS



1/4in TEMPERED GLASS PANEL

Order separately from a local glass company.



6ft GLASS CHANNEL INSERT

	Part Number	Dimension
Upper	GT033106	0.98 x 0.98
Lower	GB033106	1.132 x 0.968



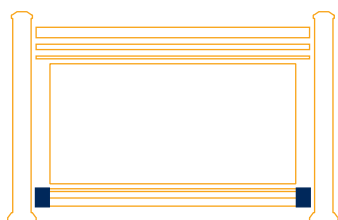
6ft GLASS CHANNEL

	Part Number	Dimension
Upper	GN083106	1.35 x 1.03
Lower	GE033106	1.274 x 1.49



TOP RAIL SNAP

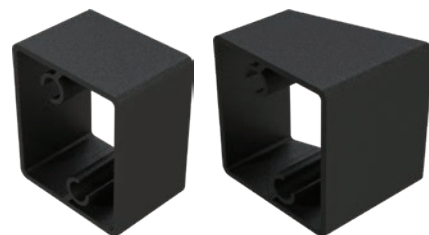
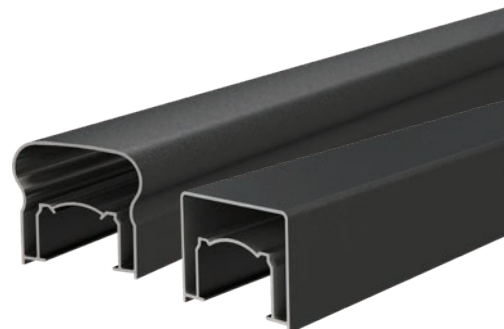
	Victorian	Alta	Actual Length
18ft	VT393118	AL893118	216



PANEL ATTACH BRACKETS

	Part Number	Dimension
Straight	GR034110	1.45 x 1.66 x 1.00
22.5°	GR034122	1.274 x 1.66 x 1.6

● B=Black ● W=White ● Z=Bronze

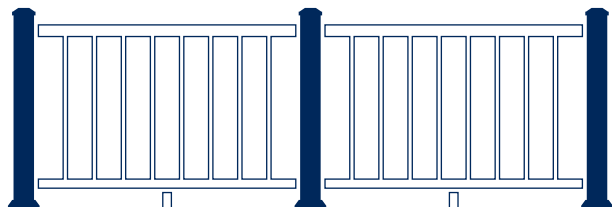




ALUMINUM POST SYSTEMS **6**

Our aluminum posts provide strength and durability with premium, powder-coated extrusions assembled with no welds, no rivets, and all hidden fasteners. Available with various top rail or lighting options.

POST-TO-POST SYSTEM



POST-TO-POST

3in END POSTS - 3in INLINE POST

WHAT YOU NEED TO ORDER

ALUMINUM 3in POSTS



VARIOUS ORDER OPTIONS

1 3in ALUMINUM POST KITS

Kits include: assembled post and base plate, post cap and post base plate vinyl skirt.

Post length	Part number
3in x 36in	HK441336
3in x 42in	HK441342
3in x 48in	HK441348

● B=Black ● W=White ● Z=Bronze

Post-to-Deck mount screws/anchors sold separately.



2 3in ALUMINUM POST TUBES ONLY

Order post tube only for using with other post mount options like Fascia Mount or Juliet Mount

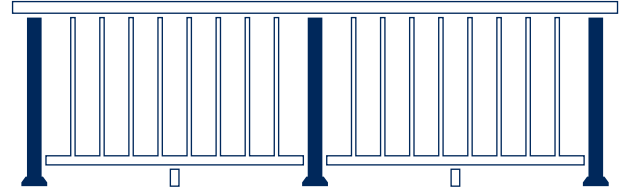
Post length	Part number
3in x 36in	PO843336
3in x 42in	PO843342
3in x 48in	PO843348

● B=Black ● W=White ● Z=Bronze

See Pages 43-45 for various post mount options.



CONTINUOUS POST SYSTEM



CONTINUOUS

2in END POSTS - 2in INLINE POST

WHAT YOU NEED TO ORDER

ALUMINUM 2in POSTS

VARIOUS ORDER OPTIONS

1 2in ALUMINUM POST KITS

Kits include: assembled post and base plate, post base plate vinyl skirt, straight cross-over bracket and two #8 x 1.5in self-tapping screws.

Post length	Part number
2in x 36in	HK341236
2in x 42in	HK341236
2in x 48in	HK341236

● B=Black ● W=White ● Z=Bronze

Post-to-Deck mount screws/anchors sold separately.



2 2in ALUMINUM POST TUBES ONLY

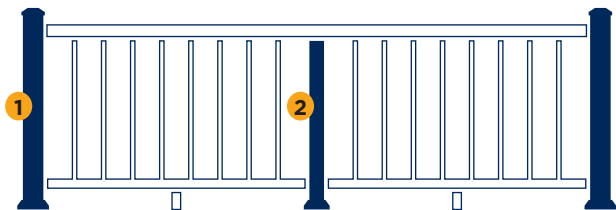
Order post tube only for using with other post mount options like Fascia Mount, Juliet Mount

Post length	Part number
2in x 36in	PO043236
2in x 42in	PO043242
2in x 48in	PO043248

● B=Black ● W=White ● Z=Bronze



COMBINATION POST SYSTEM



COMBINATION

3in END POSTS - 2in INLINE POST

WHAT YOU NEED TO ORDER

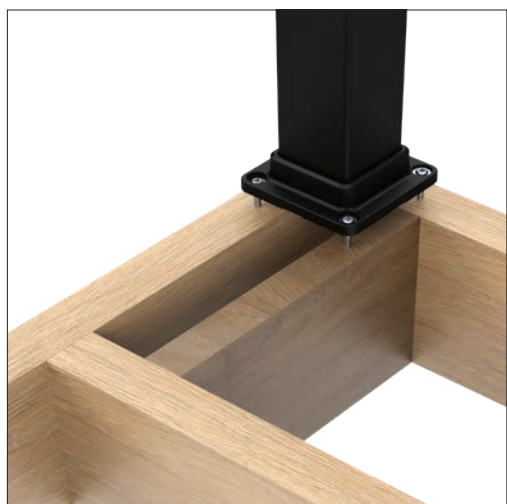
- 1 ALUMINUM 2in POST FOR INLINE POST
- 2 ALUMINUM 3in POST FOR END POST

NOTE:

3in Posts are required at stair transition points.



STANDARD BASE MOUNT OPTIONS

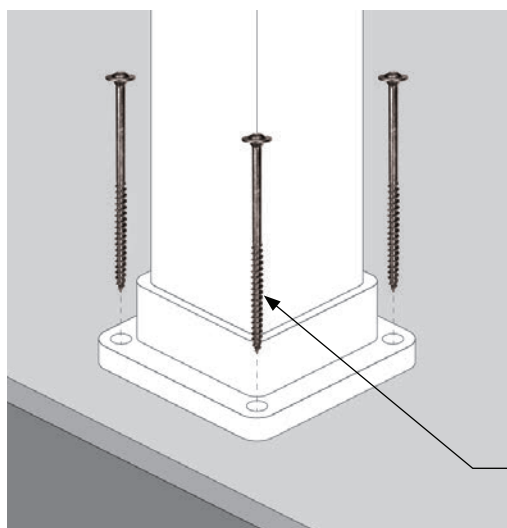


HOW TO ASSEMBLE

Proper post blocking is required for Standard Base Mount option.

NOTE:

Deck Boards are removed for easy view of the post blocking application.



Standard Base Mount is assembled with the Post in Standard Post Kit, used to secure the Post to the deck board on surface with four 5/16in x 6in GRK Screws.

For Wood: 5/16in x 6in Exterior Construction Washer Head Structural Screws **P/N SD04964**

For Concrete: #14 x 3in Concrete Anchors **P/N SA09103**

FASCIA MOUNT OPTIONS



2in FASCIA BRACKET



3in FASCIA BRACKET



2in FASCIA 90°
OUTSIDE BRACKET



3in FASCIA 90°
OUTSIDE BRACKET



2in FASCIA 90°
INSIDE BRACKET



3in FASCIA 90°
INSIDE BRACKET

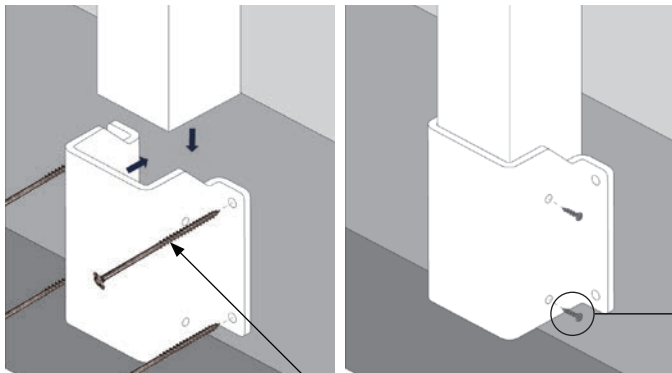
FASCIA BRACKETS

Order separately from Post Tubes. See Post Tubes options on Pages 40-41.

	Part Number	Dimension
2in Post	FM044200	4.64 x 2.286 x 6.00
3in Post	FM044300	5.64 x 3.036 x 6.00

NOTE: with Fascia Mount, order longer post tubes:

- 42in Post Tube for 36in Railing System
- 48in Post Tube for 42in Railing System



HOW TO ASSEMBLE

Fascia Bracket is sold separately from Post and is used to secure the Post to a surface such as a wall or the outside face of a balcony, using 4 screws attaching Fascia Bracket to the Post and 4 screws attaching Fascia Bracket to the surface.

NOTE: Posts and Fascia Brackets are sold separately.

#14 x 1.5in Color Matched Self-tapping Screw
P/N ST09951B/W/Z

For Wood: 5/16in x 6in Exterior Construction Washer Head Structural Screw P/N SDO4964

For Concrete: #14 x 3in Concrete Anchor
P/N SA09103

JULIET MOUNT OPTIONS



JULIET BRACKET

Order separately with Post Tubes.
See Post Tubes options at Pages 40-41.

	Part Number	Dimension
2in Post	JPO48200	2.31 x 2.095 x 8.095
3in Post	JPO48300	3.31 x 3.095 x 9.095



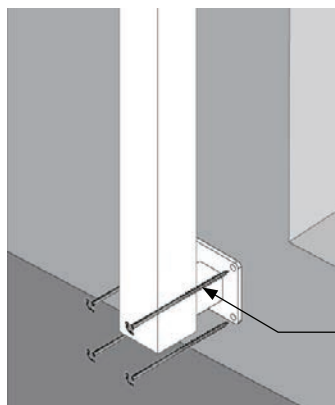
**2in JULIET BRACKET
ASSEMBLED WITH
2in POST TUBE**



**2in JULIET BRACKET
ASSEMBLED WITH
3in POST TUBE**

NOTE: with Juliet Mount:

- 2 Juliet Brackets (above and below) are required for each Post
- Post height depends on actual situation



HOW TO ASSEMBLE

Fascia Bracket is sold separately from Post and is used to secure the Post to a surface such as a wall or the outside face of a balcony, using 4 screws attaching Fascia Bracket to the Post and 4 screws attaching Fascia Bracket to the surface.

NOTE:

Posts and Juliet Brackets are sold separately.

For Wood: 5/16in x 6in Exterior Construction Washer Head Structural Screw **P/N SD04964**






For Concrete: #14 x 3in Concrete Anchor **P/N SA09103**

HORIZONTAL CABLE ALUMINUM POSTS

POST-TO-POST SYSTEM

HORIZONTAL CABLE 3in POST KITS

36in SYSTEM

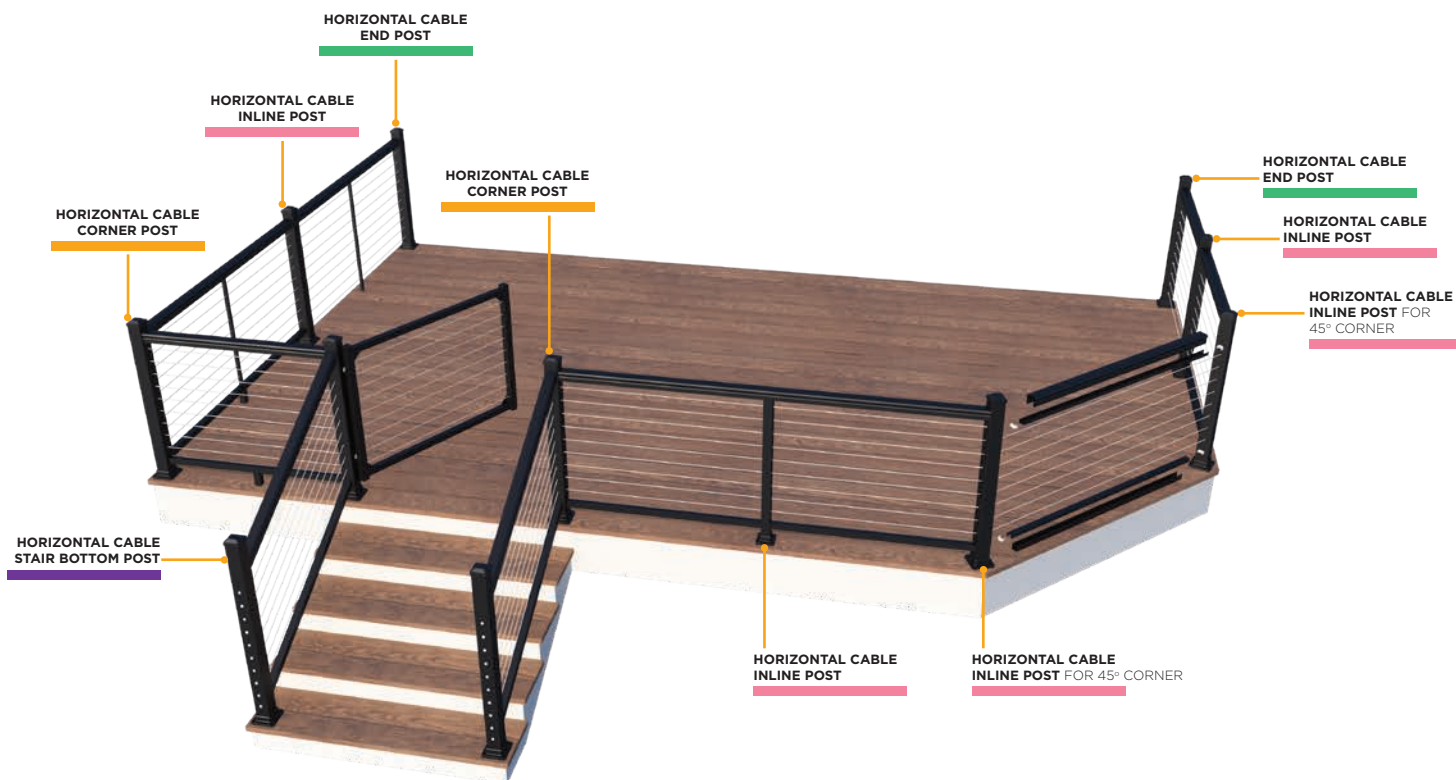
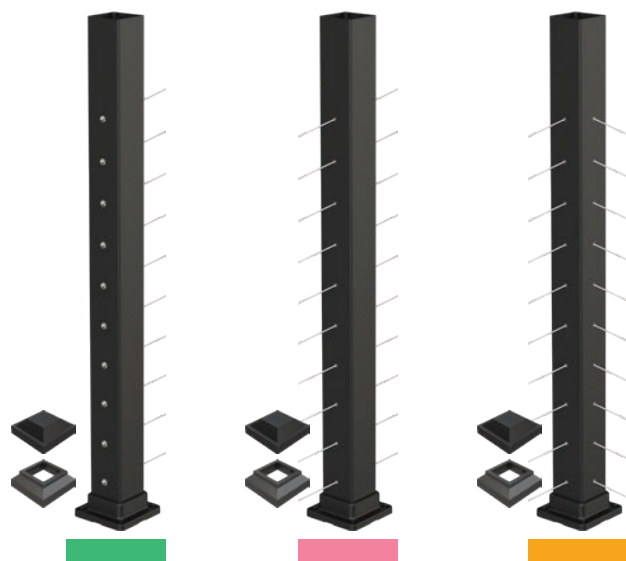
Post	Product Number
 3in x 36in End Deck Post	PC6E1336
 3in x 36in Inline Deck Post	PC6I1336
 3in x 36in Corner Deck Post	PC6C1336
 3in x 42in Inline Stair Post	PC6S1342
 3in x 42in Stair Bottom Post	PC6B1342

42in SYSTEM

Post	Product Number
3in x 42in End Deck Post	PC6E1342
3in x 42in Inline Deck Post	PC6I1342
3in x 42in Corner Deck Post	PC6C1342
3in x 48in Inline Stair Post	PC6S1348
3in x 48in Stair Bottom Post	PC6B1348

● B=Black ● W=White ● Z=Bronze

Post-to-Surface screws/anchors sold separately.



NOTES:

Taller posts are required for inline stair and bottom stair posts:

- 36in System uses 42in Inline Stair Post & 42in Stair Bottom Post
- 42in System uses 48in Inline Stair Post & 48in Stair Bottom Post

3in Horizontal Cable Post is required for stair top and bottom post.

HORIZONTAL CABLE ALUMINUM POSTS

CONTINUOUS SYSTEM

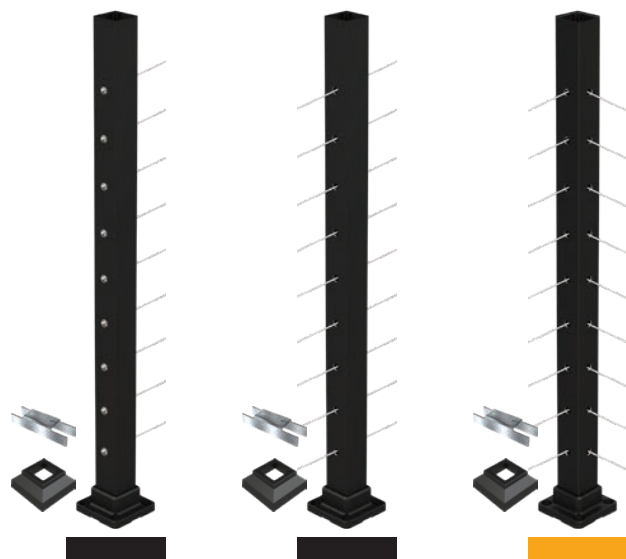
HORIZONTAL CABLE 2in POST KITS

36in SYSTEM

Post	Product Number
2in x 36in End Deck Post	PC6E1236
2in x 36in Inline Deck Post	PC6I1236
2in x 36in Corner Deck Post	PC6C1236
2in x 42in Inline Stair Post	PC6S1242

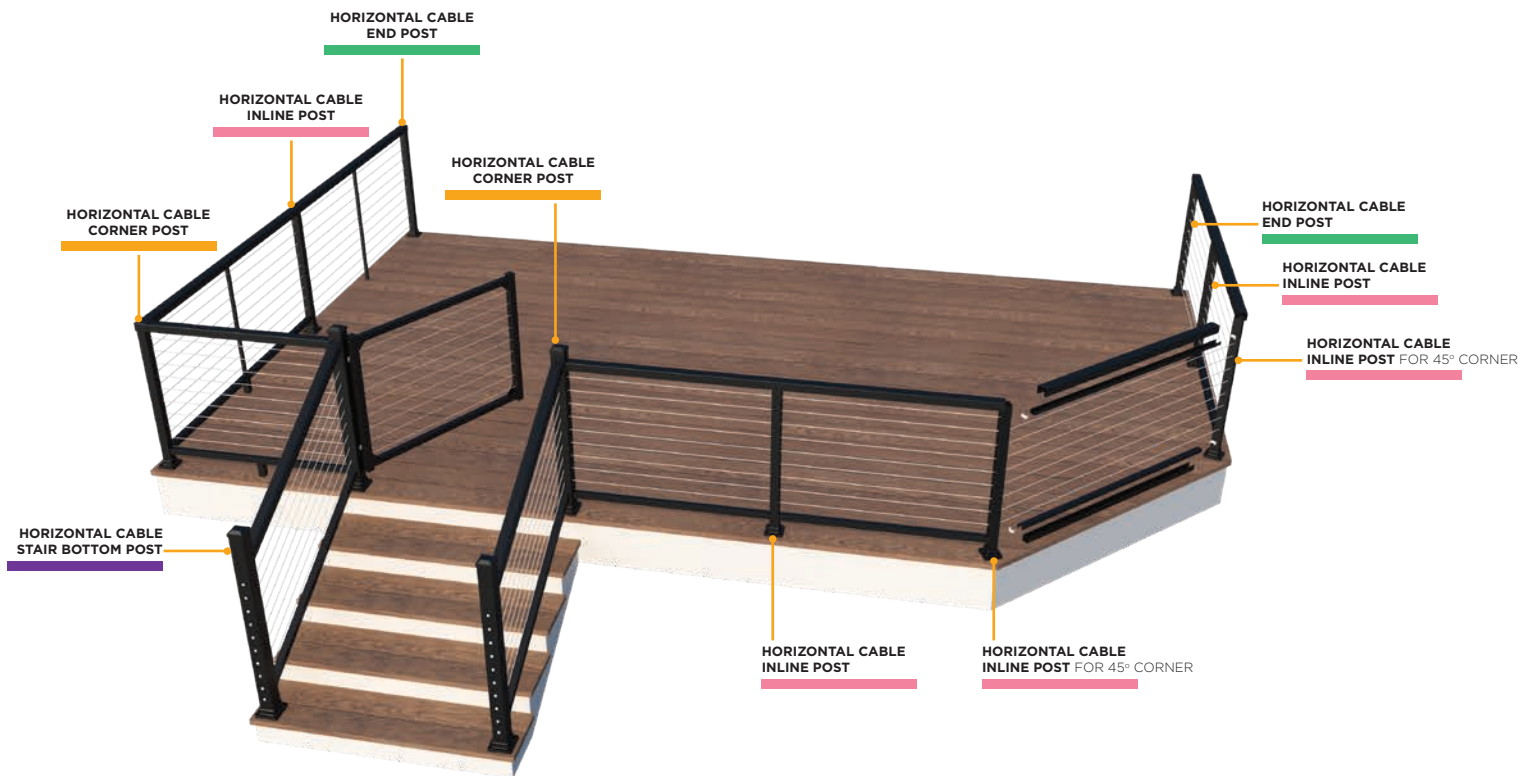
42in SYSTEM

Post	Product Number
2in x 42in End Deck Post	PC6E1242
2in x 42in Inline Deck Post	PC6I1242
2in x 42in Corner Deck Post	PC6C1242
2in x 48in Inline Stair Post	PC6S1248



● B=Black ● W=White ● Z=Bronze

Post-to-Surface screws/anchors sold separately.



NOTES:

Taller posts are required for inline stair and bottom stair posts:

- 36in System uses 42in Inline Stair Post & 42in Stair Bottom Post
- 42in System uses 48in Inline Stair Post & 48in Stair Bottom Post

3in Horizontal Cable Post is required for stair top and bottom post.

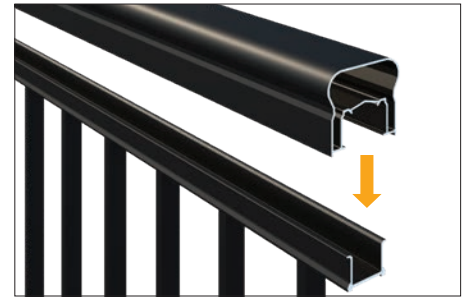


TOP RAIL SNAP

For use with continuous rail panels and 2in posts. 18ft Length.

	Victorian	Alta	Length
6ft	VT393106	AL893106	69.43
8ft	VT393108	AL893108	91.31
18ft	VT393118	AL893118	216

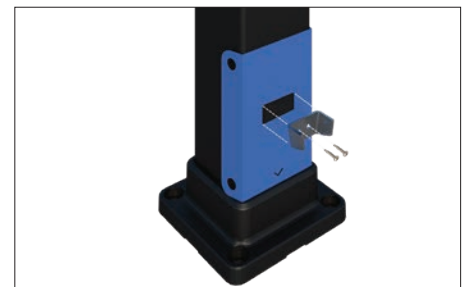
● B=Black ● W=White ● Z=Bronze



RAIL CLIP JIG/TOUCH-UP PAINT

Ensures proper placement of the lower rail clips when attaching to posts. Touch-up paint is included for use when cutting extrusions.

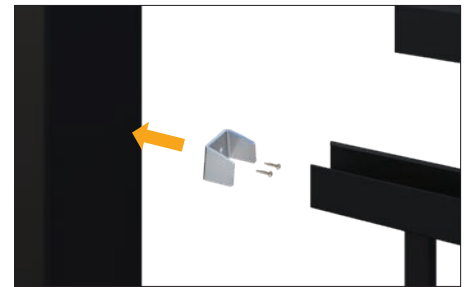
P/N HJ39700



DECK/STAIR PANEL ATTACH KIT

Required when deck or stair panel is cut and attaching more than one section.

P/N HC39500



22.5° PANEL ATTACH KIT

Required for 45° deck corners. Refer to installation instructions for proper post placement.

P/N HC06422



45° WALL MOUNT KIT

Required for 45° wall applications. Not to be used for post applications.

P/N HC06445





CUT COLLAR KIT

For applications with a top snap. Cover miscuts to a top rail snap and bottom rail.

Top Rail	Deck	Stair
Victorian	VT361202	VT351202
Alta	AL061202	VT051202

● B=Black ● W=White ● Z=Bronze

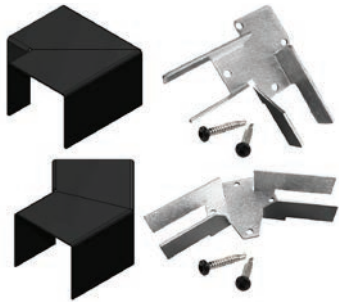


BOTTOM SNAP CUT COLLAR KIT

For applications without a top snap. Cover miscuts to top or bottom rails.

Deck P/N BH061202
Stair P/N BH051202

● B=Black ● W=White ● Z=Bronze



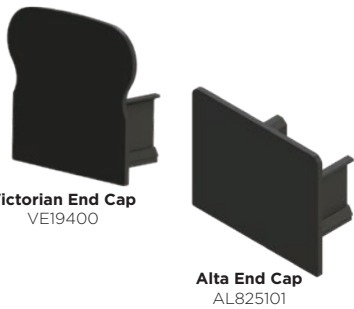
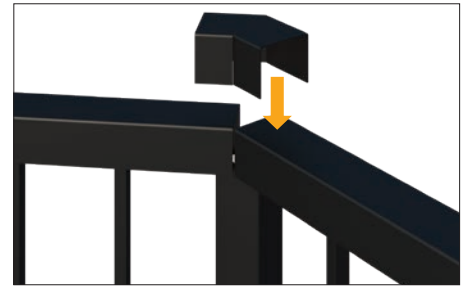
ALTA CORNER KIT

Connect and cover the corners in Continuous system with Alta Top Rail.

90° Corner P/N HC801290
45° Corner P/N HC801245

Only available as kit.

● B=Black ● W=White ● Z=Bronze

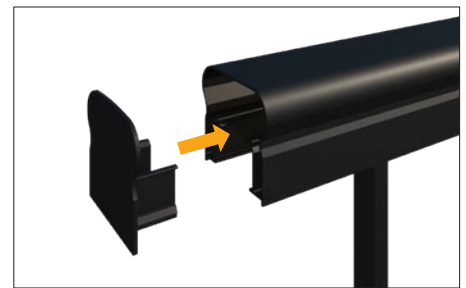


TOP RAIL END CAP

For use with Continuous System.

Victorian P/N VE19400
Alta P/N AL825101

● B=Black ● W=White ● Z=Bronze

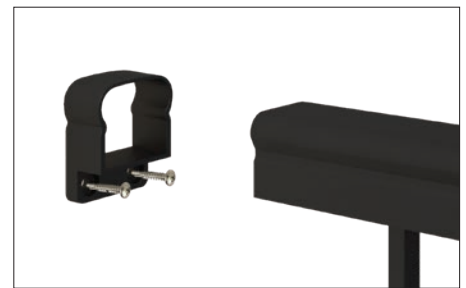


STRAIGHT WALL MOUNT KIT

Used to secure deck panels to structural surface without a post for support.

Victorian P/N HC39100
Alta P/N HC89100

● B=Black ● W=White ● Z=Bronze



TOOLS RECOMMENDED FOR INSTALLATION



CORDLESS DRILL



TAPE MEASURE



MITER SAW
(WITH NONFERROUS BLADE)



**84-TOOTH
NONFERROUS BLADE**



SAFETY GLASSES



**6in #2 SQUARE
DRIVE BIT**



PENCIL



3/16in DRILL BIT



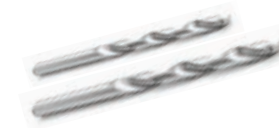
LEVEL



**1/4in MASONRY
DRILL BIT**
(CONCRETE APPLICATIONS)



BAR CLAMP



5/16in & 5/8in DRILL BITS
(FOR WIRED LIGHTING
APPLICATIONS)

HORIZONTAL CABLE TOOLS



CABLE RELEASE TOOL

Product No.	Dimension
CL007001	1.13 x 0.47



CABLE THREADING TOOL

Product No.	Dimension
CL007003	4.5 x 0.185



90° CABLE THREADING TOOL

Product No.	Dimension
CL007004	R = 1.288



CABLE CUTTING TOOL

Product No.	Dimension
CL007005	



CABLE TENSION GAUGE

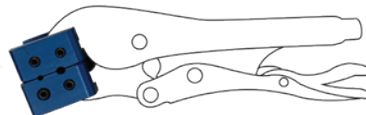
Product No.	Dimension
CL007008	



CABLE GRIPPER TOOL

Product No.	Dimension
CL007009	1.00 x 1.25 x 0.718

Note: Grip only. Plier is not available.



HORIZONTAL CABLE COMBO TOOL KIT

Kits include: Cable Release Tool, Cable Threading Tool, 90° Cable Threading Tool

Part Number: TK32750

POST FASTENERS



WOOD SUBSTRATE



4X 5/16in x 6in Exterior Construction Washer Head Structural Screw

Part Number: SD04964

NOTES:

- .50 specific gravity lumber required.
- Ensure proper blocking.
- Order separately. Available from Ultralox.



CONCRETE SUBSTRATE



4X 1/4in x 3in Concrete Anchor

Part Number: SA09103

NOTES:

- Minimum 3,750 PSI Concrete required.
- 4in offset in from any edge of concrete substrate.
- Order separately. Available from Ultralox.
- For Light Concrete substrate, requires Embedment Plate
 - ◆ Requires Embedment Plate (Part Number: EP014606)
 - ◆ See Installation Instructions for information



WALL MOUNT ATTACHMENT



2X #14 x 2ftft Exterior Wood Screws

NOTES:

- .50 specific gravity lumber required.
- Included with Straight Wall Mount Kit.

GATE KITS



BALUSTER GATE KITS

Gate	Part number
36in x 48in Baluster Gate Kit	HG07518
42in x 48in Baluster Gate Kit	HG07520

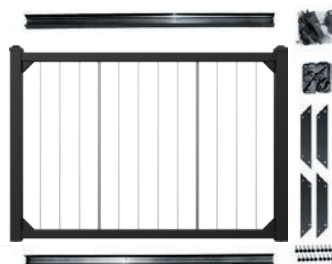
● B=Black ● W=White ● Z=Bronze



VERTICAL CABLE GATE KITS

Gate	Part number
36in x 49in Vertical Cable Gate Kit	CG601349
42in x 49in Vertical Cable Gate Kit	CG601449

● B=Black ● W=White ● Z=Bronze



HORIZONTAL CABLE GATE KITS

Gate	Part number
36in x 49in Horizontal Cable Gate Kit	CG681349
42in x 49in Horizontal Cable Gate Kit	CG681449

● B=Black ● W=White ● Z=Bronze



NOTES:

Kits include gate, self-closing hinges and keyed latching hardware.

Baluster Gate Kits: For openings up to 49in wide.

Vertical and Horizontal Gate Kits: Adjustable width for openings up to 50in wide.

Kits can be purchased through UltraLox®.

LIGHTING AND ACCESSORIES



3in LED POST CAP PERIMETER LIGHT

.3 watts, 3 LEDs, 39 Lumens, 4,000 Kelvin

P/N LE045310



SOLAR 3in LED POST CAP PERIMETER LIGHT

3 Lumens, 3,000 Kelvin

P/N LS045310



3in LED POST CAP INDIRECT LIGHT

1.2 watts, 12 LEDs (3 LEDs per side), 156 Lumens, with an approximate effective Lumen output of 39 Lumens, 4,000 Kelvin.

P/N LE045311



3in LOW PROFILE POST CAP

Without light

P/N CC025303



POWER PACK

12V 100W single tap, built in adjustable timer and photo cell

P/N LE095101



UR WIRE CONNECTOR

10 Pack. Replacement part, also included with post cap lights

P/N LE095104



100FT 16/2 GA WIRE

P/N LE095102



REPLACEMENT PARTS

RAILING PANEL PARTS

Victorian Top Rail Snap - 6ft	VT393106
Victorian Top Rail Snap - 8ft	VT393108
Alta Top Rail Snap - 6ft	AL893106
Alta Top Rail Snap - 8ft	AL893108
Bottom Rail Snap - 6ft	SH093106
Bottom Rail Snap - 8ft	SH093108
Victorian Continuous Top Rail Snap - 18ft	VT393118
Alta Continuous Top Rail Snap - 18ft	AL893118

HARDWARE

#8 x 3/4in Self-Tapping Screws - 16 pack	ST09934K
#8 x 1-1/2in Self-Tapping Screws - 20 pack	ST099320
#14 x 1-1/2in Self-Tapping Screws - 20 pack	ST099520
Vertical Cable Replacement Kit	VC681000K
M8 x 80mm Stainless Steel Hex Head (13mm) Screw - 1 ct.	SS009880

3in POST PARTS

3in Standard Base Plate	BP04450
3in Base Plate Vinyl Skirt	BC015305
3in Standard Post Cap	CC044300
3in Low Profile Post Cap	CC025303

2in POST PARTS

2in Standard Base Plate	BP014200
2in Base Plate Vinyl Skirt	BC015204
2in Crossover Bracket	CL044204
2in Stair Crossover Bracket	CL04425

SMALL PARTS

Support Leg with color matched screw	SL09403K
--------------------------------------	----------

● B=Black ● W=White ● Z=Bronze

For complete installation instructions, visit [Ultralox.com](https://www.ultralox.com)



ADA 8 HANDRAIL

The Ultralox® ADA handrail can be installed with nearly any design you choose, including stairs, ramps, and horizontal installations. And now we have made it easier than ever to get what you need with convenient kits.



ADA HANDRAIL KITS



ADA PIPE RAIL AND 90° RETURN KIT

Kit includes:

- 1 - 94in Pipe
- 2 - 90° Wall Returns and Covers
- 2 - 3in Post Backer Plates
- 2 - Joiner Rings
- 6 - #10 x 1-1/2in Self-tapping Screws
- 4 - #8 x 3/4in Color Matched Self-tapping Screws

P/N: AD901102



ADA 90° RETURN KIT

Required when Pipe Rail is cut into two pieces. Does not include 94in pipe rail.

Kit includes:

- 2 - 90° Wall Returns and Covers
- 2 - 3in Post Backer Plates
- 2 - Joiner Rings
- 6 - #10 x 1-1/2in Self-tapping Screws
- 4 - #8 x 3/4in Color Matched Self-tapping Screws

P/N: AD901101

● B=Black ● W=White ● Z=Bronze

ADA Handrail can be used for stairs, ramps & horizontal applications.





ADA PIPE RAIL EXTENSION KIT

Kit includes:

- 1 - 94in Pipe
- 2 - 6in Joiners
- 2 - Joiner Rings
- 2 - Rail Support Brackets with adapters and caps
- 2 - 3in Post Backer Plates
- 6 - #10 x 1-1/2in Self-tapping Screws
- 8 - #8 x 3/4in Color Matched Self-tapping Screws

P/N: AD901103



ADA HANDICAP LOOP KIT



Kit includes:

- 2 - Handicap Loops
- 2 - Rail Support Brackets with adapters and caps
- 2 - Adjustable Elbows
- 2 - 3in Post Backer Plates
- 12 - #8 x 3/4in Self-tapping Screws
- 6 - #10 x 1-1/2in Self-tapping Screws

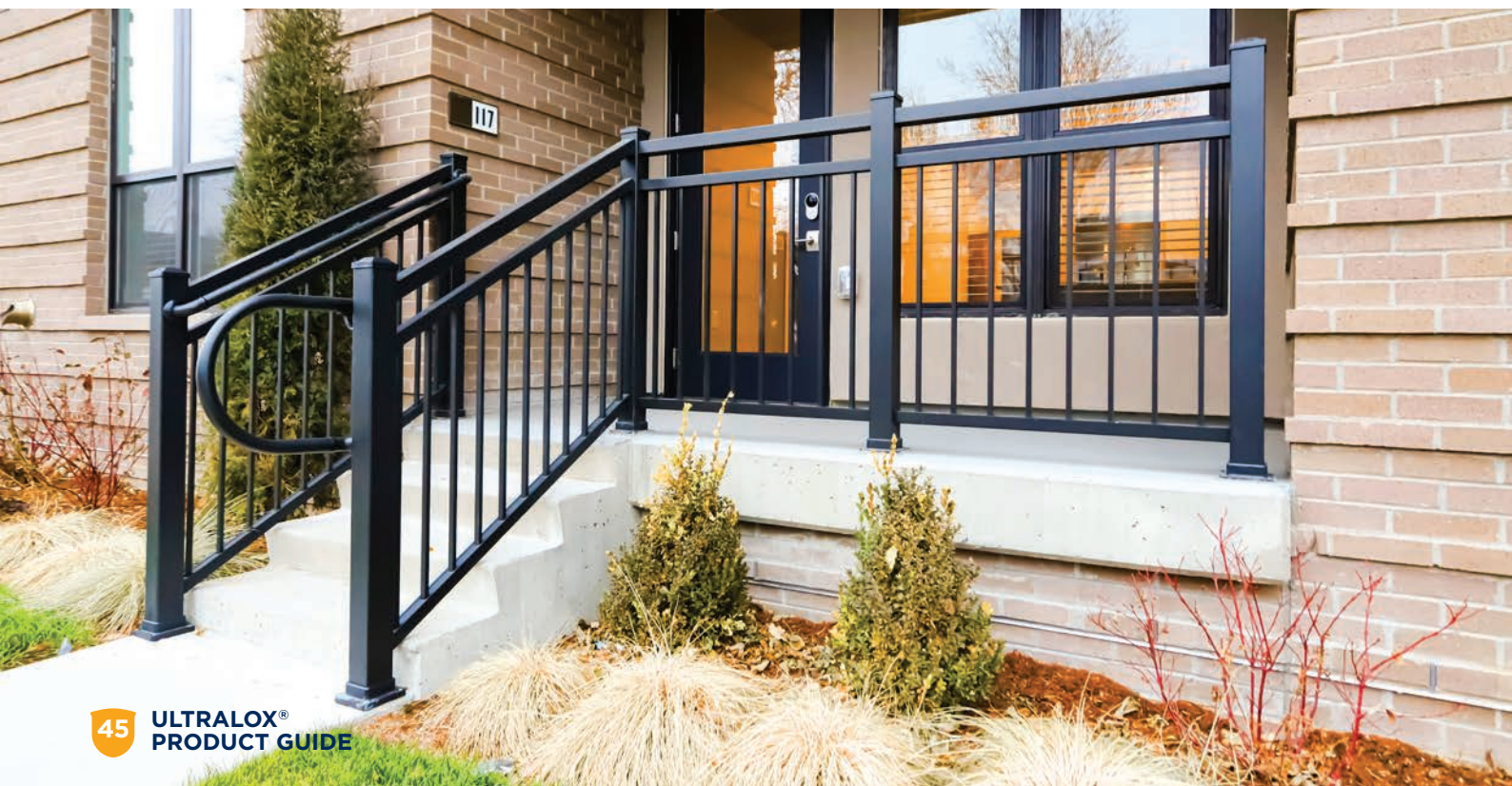
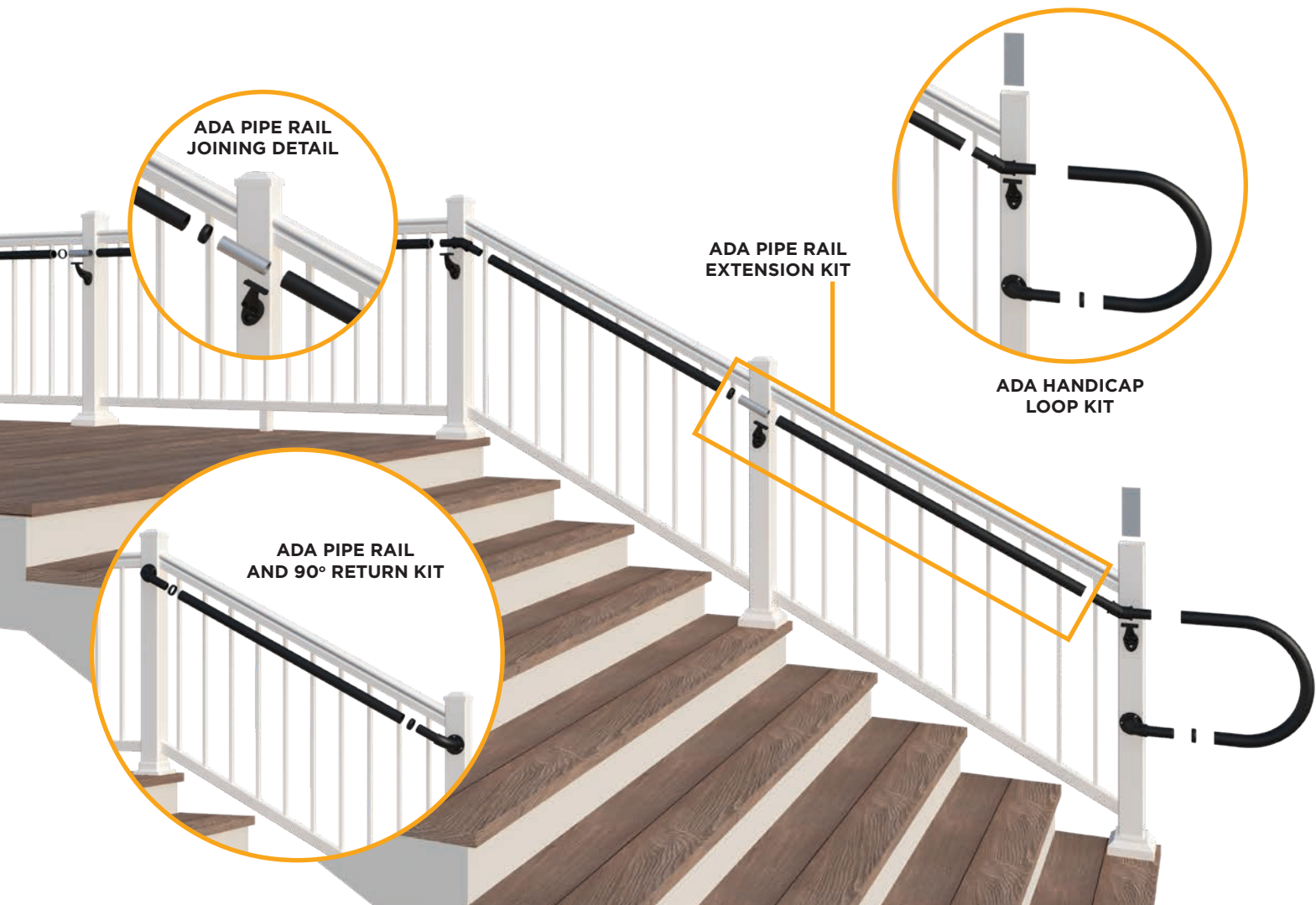
P/N: AD901104

● B=Black ● W=White ● Z=Bronze

ADA Handrail can be used for stairs, ramps & horizontal applications.



ADA HANDRAIL ASSEMBLY



ADA HANDRAIL INDIVIDUAL PARTS



ADA HAND RAILING
1.5in X 94in

P/N AD903194



90° WALL RETURN

P/N AD905118



ADA SUPPORT BRACKET
Use on 2in and 3in Posts.

P/N AD908102



INSIDE CORNER MOUNT

P/N AD908599



ADA HANDICAP LOOP

P/N AD905168



ADA 6IN PIPE JOINER

P/N AD905178



ADA 1.5in JOINER RING

P/N AD904188



STRAIGHT END WALL MOUNT

P/N AD905128



ADA 90° ELBOW

P/N AD905158



ADA ADJUSTABLE ELBOW

P/N AD958204



3IN POST BACKER PLATE

P/N AD905248



RAIL TO BRACKET ATTACH SCREWS

#8 x 3/4in Self-tapping Screws.
20-pack.

P/N ST091820



SUPPORT BRACKET ATTACH SCREWS

#14 x 1-1/2in Self-tapping Screws.
20-pack.

P/N ST099520



BRACKET TO ALUMINUM POST ATTACH SCREWS

#10 x 1-1/2in Self-tapping Screws.
20-pack.

P/N ST091020



ADA HANDRAIL ASSEMBLY OVERVIEW

ADA SUPPORT BRACKET
ATTACHED ON POST
AD908102

ADA 90° RETURN
ATTACHED ON POST
AD905118

DETAIL A

ADA HANDICAP LOOP
(AD905168) REQUIRES **ADA 90° WALL RETURN** (AD905118) AND **ADA SUPPORT BRACKET** (AD908102) TO ATTACH ON POST

ADA HANDICAP LOOP
AD905168

STRAIGHT END WALL MOUNT
AD905128

ADA HANDRAIL ON DECK
AD903194

ADA 90° ELBOW
AD905158

ADA ADJUSTABLE ELBOW
AD958204

ADA 90° WALL RETURN
ATTACHED ON WALL
AD905118

ADA SUPPORT BRACKET
ATTACHED ON WALL
AD908102

ADA HANDRAIL ON STAIR WALL
AD903194

ADA HANDRAIL ON RAMP
AD903194

ADA HANDICAP LOOP
AD905168

ADA SUPPORT BRACKET
ATTACHED ON POST
AD908102

ADA HANDICAP LOOP
AD905168

ADA HANDRAIL ON STAIR
AD903194

NOTES:

Railing Panels are removed for clear view of the ADA Handrail assembly.
ADA 1.5in Joiner Rings are used to cover connections.



FENCE SYSTEMS 9

Our newly expanded fence line offers the durability and elegance people have come to expect from our baluster railing line in a wide range of sizes and styles. With heights ranging from 48in to 72in, our fence line has all your potential applications covered from commercial to residential.



FENCE PANEL OPTIONS

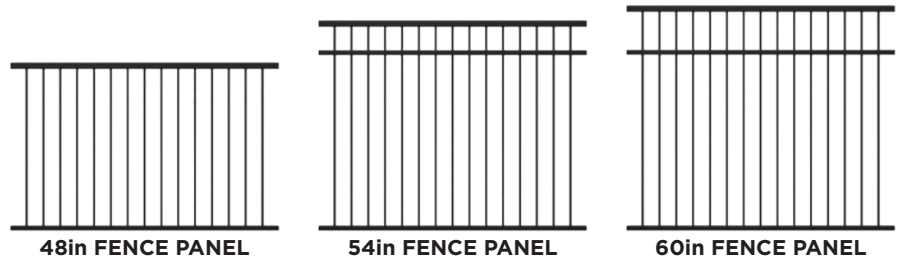
1/2in x 3/4in FENCE SYSTEM

Panel Size	Part Number
48in x 6ft	HF621406
48in x 8ft	HF621408
54in x 6ft	HF621506
54in x 8ft	HF621508
60in x 6ft	HF621606
60in x 8ft	HF621608

● B=Black ● W=White ● Z=Bronze

Fence Panel Kits Include:

- Preassembled Fence Panel
- Fence Cap (top rail cover)
- Panel Attach Kit for securing to two posts
- Installation Instructions



Actual Panel Lengths: 6ft Panels = 69.43in, 8ft Panels = 91.31in

Actual Panel Heights: 48in Panels = 46.24in, 54in Panels = 52.12in, 60in Panels = 58.12in

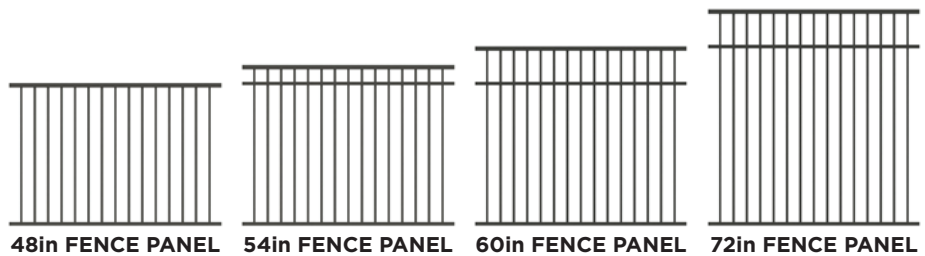
3/4in x 3/4in FENCE SYSTEM

Panel Size	Part Number
48in x 6ft	HF631406
48in x 8ft	HF631408
54in x 6ft	HF631506
54in x 8ft	HF631508
60in x 6ft	HF631606
60in x 8ft	HF631608
72in x 6ft	HF631606
72in x 8ft	HF631608

● B=Black ● W=White ● Z=Bronze

Fence Panel Kits Include:

- Preassembled Fence Panel
- Fence Cap (top rail cover)
- Panel Attach Kit for securing to two posts
- Installation Instructions



Actual Panel Lengths: 6ft Panels = 69.43in, 8ft Panels = 91.31in

Actual Panel Heights: 48in Panels = 46.24in, 54in Panels = 52.12in, 60in Panels = 58.12in, 72in Panels = 70.12in

FENCE ATTACH KITS



FENCE ATTACH KIT

Required when fence panel is cut and attaching more than one section.

P/N HF671300



22.5° FENCE ATTACH KIT

Required for 45° fence corners. Refer to installation instructions for proper post placement.

P/N: HF671322

FENCE POST OPTIONS

SURFACE MOUNT FENCE POSTS

2in FENCE POST KITS

Post Size	Part Number
48in x 2in	HP631248
54in x 2in	HP631254
60in x 2in	HP631260
72in x 2in	HP631272

● B=Black ● W=White ● Z=Bronze

Surface Mount Fence Post Kit Include:

- Pre-Assembled Post and Base Plate
- Base Plate Plugs
- Post Cap

3in FENCE POST KITS

Post Size	Part Number
48in x 3in	HP631348
54in x 3in	HP631354
60in x 3in	HP631360
72in x 3in	HP631372



Actual Surface Mount Post Heights:

48in Posts = 49.375in 54in Posts = 55.375in
 60in Posts = 61.375in 72in Posts = 74in

BURIED FENCE POSTS

2in FENCE POST KITS

Post Size	Part Number
48in x 2in	HP631280
54in x 2in	HP631286
60in x 2in	HP631292
72in x 2in	HP631204

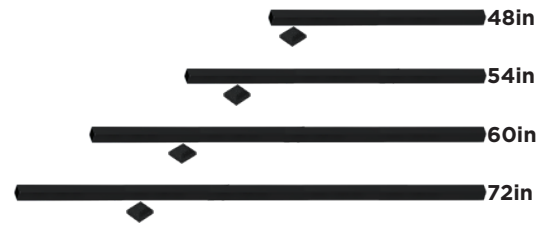
● B=Black ● W=White ● Z=Bronze

Surface Mount Fence Post Kits Include:

- Aluminum Fence Post
- Post Cap

3in FENCE POST KITS

Post Size	Part Number
48in x 3in	HP631380
54in x 3in	HP631386
60in x 3in	HP631392
72in x 3in	HP631304



Actual Surface Mount Post Heights:

48in Posts = 80in 54in Posts = 86in
 60in Posts = 92in 72in Posts = 104in

FENCE GATE OPTIONS

FENCE GATE KITS

1/2in x 3/4in FENCE GATE KITS

Post Size	Part Number
48in x 48in	HG671448
54in x 48in	HG671454
60in x 48in	HG671460

● B=Black ● W=White ● Z=Bronze

Gate Kits Include:

- Pre-Assembled Gate Panel
- Self-Closing Hinges
- Keyed Latching Hardware
- Installation Instructions



Actual Gate Lengths: 47in

Actual Gate Heights: 48in Gates = 49.9in; 54in Gates = 55.9in; 60in Gates = 61.9in.

3/4in x 3/4in FENCE GATE KITS

Post Size	Part Number
48in x 48in	HF631448
54in x 48in	HF631454
60in x 48in	HF631460
72in x 48in	HF631472

● B=Black ● W=White ● Z=Bronze

Gate Kits Include:

- Pre-Assembled Gate Panel
- Self-Closing Hinges
- Keyed Latching Hardware
- Installation Instructions



Actual Gate Lengths: 47in

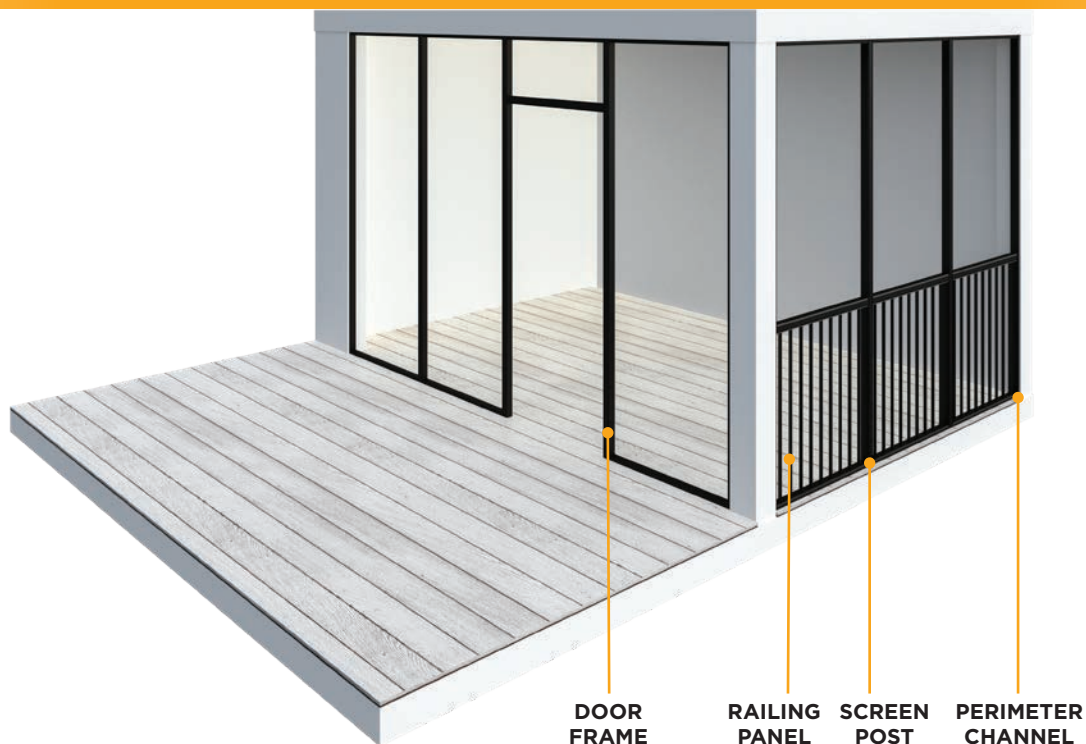
Actual Gate Heights: 48in Gates = 49.9in; 54in Gates = 55.9in;
60in Gates = 61.9in; 72in Gates = 74.53in.

10 SCREEN RAIL



When searching for railing, choose a product that allows you to enjoy the outdoors while keeping those pesky bugs out. With integrated railing, our new screen rail will bring beauty, functionality and comfort to your outdoor space, allowing you to enjoy your deck, no matter the season.

SCREEN RAIL KITS



SCREEN RAIL CONVENIENT KITS



6FT W SCREEN RAIL PANEL KITS

- 1 - 6ft W Screen Rail Panel (Actual Length = 69.43in)
- 1 - 6ft Top Rail Snap
- 1 - 6ft Perimeter Channel
- 2 - Locating Blocks
- 6 - L Brackets
- 4 - #8 x 1in Self-tapping Screws
- 1 - 30ft x .315in Flat Screen Spline
- Installation Instructions
- 36in H Panel Kit - P/N SK068306
- 42in H Panel Kit - P/N SK068406



SCREEN RAIL POST KITS

- 1 - Screen Post
- 4 - L Brackets
- 8 - #8 x 1in Self-tapping Screws
- Installation Instructions
- Used in conjunction with railing panel kit
- if opening is over 6ft
- 8.5ft Kit - P/N SK042208
- 12ft Kit - P/N SK042212



SCREEN RAIL PERIMETER CHANNEL KITS

- 2 - Perimeter Channels
- 8 - L Brackets
- 1 - 30ft x .315in Flat Screen Spline
- Installation Instructions
- 8.5ft Kit - P/N: SK002208
- 12ft Kit - P/N: SK002212

NOTE: Perimeter Channels may be used separately, without railings. However, most building codes require railings if screen enclosure is over 30in from ground level.

SCREEN RAIL DOOR FRAME KITS

- 2 - Screen Posts
- 1 - Two-Piece 3ft Screen Post
- 1 - 3ft Perimeter Channel
- 4 - Locating Blocks
- 3 - L Brackets
- 8 - #8 x 1in Self-tapping Screws
- 1 - 30ft x .315in Flat Screen Spline
- Installation Instructions
- 8.5ft Kit - P/N: SK024208
- 12ft Kit - P/N: SK024212



11 ALUMINUM FRAMING SYSTEMS

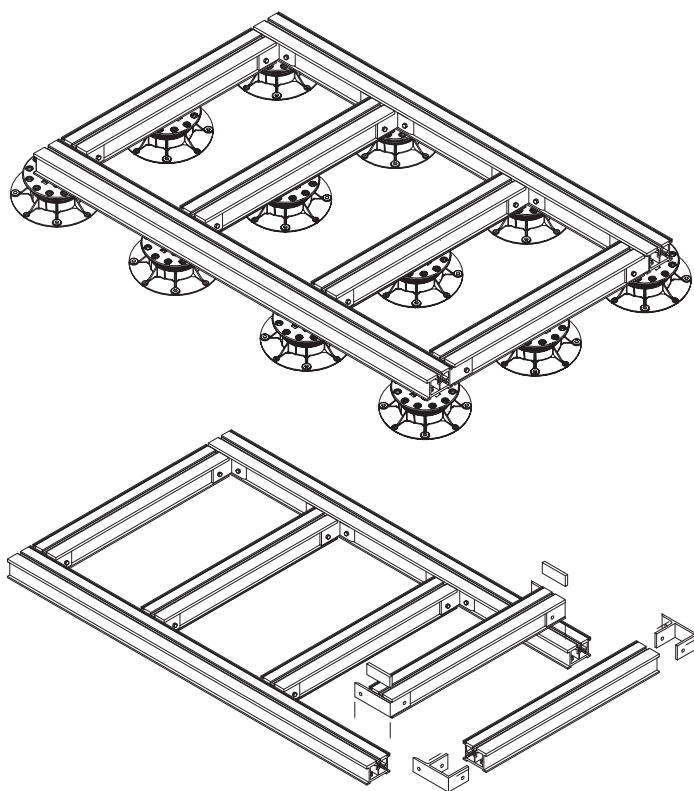


Say goodbye to re-staining, warping and rotting decks. Our patented aluminum framing system easily locks in place and lasts for years, creating a once in a lifetime purchase for a variety of commercial and residential applications.

ALUMINUM FRAMING SYSTEM

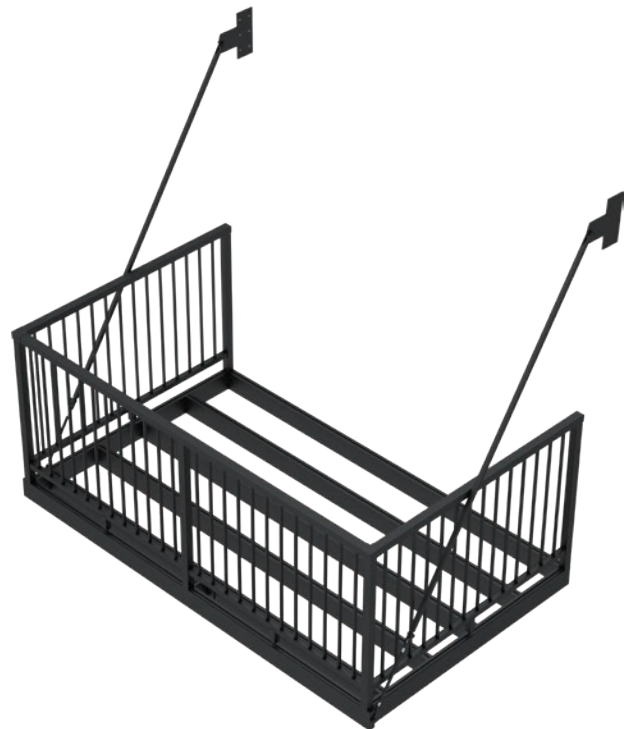
ALUMINUM FRAMING FOR COMMERCIAL ROOFTOPS

- Patented system with pre-engineered sections for quick set up saves install time and money
- Quick-Lock Technology for Rapid Assembly and Precise Framing
- Stronger & Safer – 100 lbs. per sq. ft. exceeds most commercial codes
- Longer and Lighter – 31% longer spans and 40% lighter than treated lumber
- Easy Installation – less tools to install means quicker installation and even less to maintain
- Regional Installation and Support with Monthly Training Sessions



PRE-FABRICATED ALUMINUM BALCONY SYSTEMS

- Made of all aluminum framing and decking - will never rust, rot, or warp
- Can easily accommodate balconies from 68in to 168in, juliette railing and multiple attachments styles
- Interlocking water-resistant decking with integrated handrail. No exposed baseplates or fasteners
- Aluminum hanger bar with stainless steel turnbuckles, threaded rods, and yokes all designed for preventing wind uplift
- No welding involved and is mechanically fastened, equaling easy installation
- Coated in AAMA 2604 powder coat in three colors: Black, White and Bronze
- Stainless steel fasteners
- 100% Recyclable Content
- Low maintenance

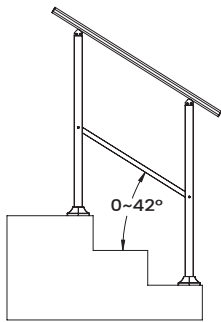
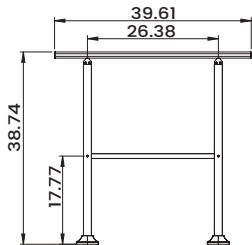


Contact your representative for more information.

ADJUSTABLE HANDRAIL

ADJUSTABLE HANDRAIL IS AVAILABLE IN 3-STEP, 4-STEP AND 5-STEP COMPLETE KITS.

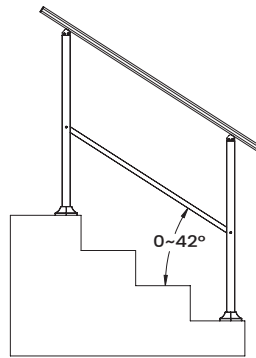
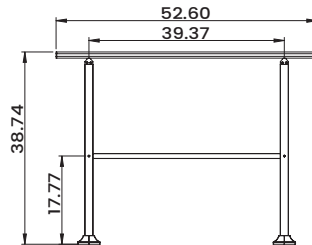
3-STEP KIT



Actual Top Rail Length: 39.61in

P/N AH428303B

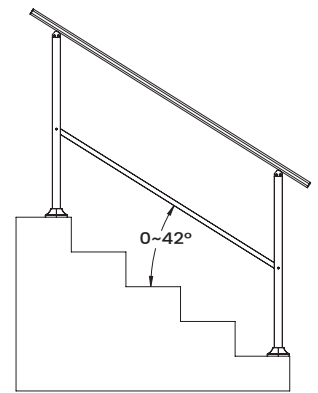
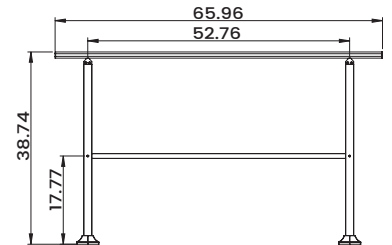
4-STEP KIT



Actual Top Rail Length: 52.6in

P/N AH428304B

5-STEP KIT



Actual Top Rail Length: 65.96in

P/N AH428305B

KITS INCLUDE:

- 1 top rail
- 1 middle rail
- 2 posts
- 2 two-piece base skirts
- hardware and installation instructions.

SPECIFICATIONS:

- Actual Height: 38.74in
- Actual Top Rail Lengths: 39.61in, 52.6in, 65.96in
- Handrail: 1.24in x 2.24in
- Post: 1.65in x 1.65in
- Base: 4in x 4in

FEATURES/BENEFITS:

- Use on level and stair applications from 0° to 42° angles.
- Mount to concrete or wood steps, ramps and sidewalks. Post-to-surface screws not included.
- All components are pre-drilled for easy assembly. No special tools required.
- Premium aluminum construction.
- Complete kit for easy ordering. Minimal exposed fasteners for a clean, contemporary look.
- Durable black finish with no maintenance required.
- Suitable for indoor and outdoor use.
- 10 year limited warranty.



Durable Black Finish
No maintenance required.

BALUSTER RAILING PLANNER



Prior to construction, check with your local regulatory agency for special code requirements in your area. Common railing height is 36in or 42in. Never span posts more than 8ft on center for baluster railing systems and 6ft on center for glass railing systems. Always ensure there is proper blocking under each post as per installation instructions. Read installation instruction and view installation videos to get a complete understanding of how the Ultralox® products assemble. Written installation instructions and videos can be found online at [Ultralox.com](https://www.ultralox.com).

HELPFUL ORDERING INFORMATION:

1. Baluster section kits include attachment clips and screws. If panels are cut and two pieces are used for installation, a separate attachment kit must be purchased.
2. Anchors and fasteners to secure posts to concrete or wood are **NOT INCLUDED** in kits.
3. Maximum post spacing on deck for baluster railing is 8ft on center and glass railing is 6ft on center
4. If using Tempered Glass Panel Kit, glass panels must be purchased separately from a local glass company.

IMPORTANT NOTES:

- Actual panel sizes: 6ft Panels = 69.43in; 8ft Panels = 91.31in.
- 3in Posts are required to reach 6ft & 8ft lengths.
- Stair railing panels are shipped at a 37° angle. Panels are adjustable and will accommodate 30-40° stair angles.
- **CAUTION:** Over-adjusting stair panels can cause loose and rattling balusters.
- 45° deck angles require 22.5° clips applied to each side of the post. The 22.5° clip kit is sold SEPARATELY.
- Using 2 posts at top of stairs is recommended if compound angle cut will be required.

PREASSEMBLED BALUSTER PANELS

	Victorian P/N	Alta P/N	Qty.
36in x 6ft Baluster Panel	<input type="checkbox"/> HR362306	<input type="checkbox"/> HR862306	
36in x 8ft Baluster Panel	<input type="checkbox"/> HR362308	<input type="checkbox"/> HR862308	
42in x 6ft Baluster Panel	<input type="checkbox"/> HR362406	<input type="checkbox"/> HR862406	
42in x 8ft Baluster Panel	<input type="checkbox"/> HR362408	<input type="checkbox"/> HR862408	
36in x 6ft Continuous Baluster Panel	<input type="checkbox"/> HR062306		
36in x 8ft Continuous Baluster Panel	<input type="checkbox"/> HR062308		
42in x 6ft Continuous Baluster Panel	<input type="checkbox"/> HR062306		
42in x 8ft Continuous Baluster Panel	<input type="checkbox"/> HR062308		

PREASSEMBLED BALUSTER STAIR PANELS

	Victorian P/N	Alta P/N	Qty.
36in x 6ft Baluster Stair Panel	<input type="checkbox"/> HS362306	<input type="checkbox"/> HS862306	
36in x 8ft Baluster Stair Panel	<input type="checkbox"/> HS362308	<input type="checkbox"/> HS862308	
42in x 6ft Baluster Stair Panel	<input type="checkbox"/> HS362406	<input type="checkbox"/> HS862406	
42in x 8ft Baluster Stair Panel	<input type="checkbox"/> HS362408	<input type="checkbox"/> HS862408	
36in x 6ft Continuous Baluster Stair Panel	<input type="checkbox"/> HS062306		
36in x 8ft Continuous Baluster Stair Panel	<input type="checkbox"/> HS062308		
42in x 6ft Continuous Baluster Stair Panel	<input type="checkbox"/> HS062306		
42in x 8ft Continuous Baluster Stair Panel	<input type="checkbox"/> HS062308		

ALUMINUM POST KITS

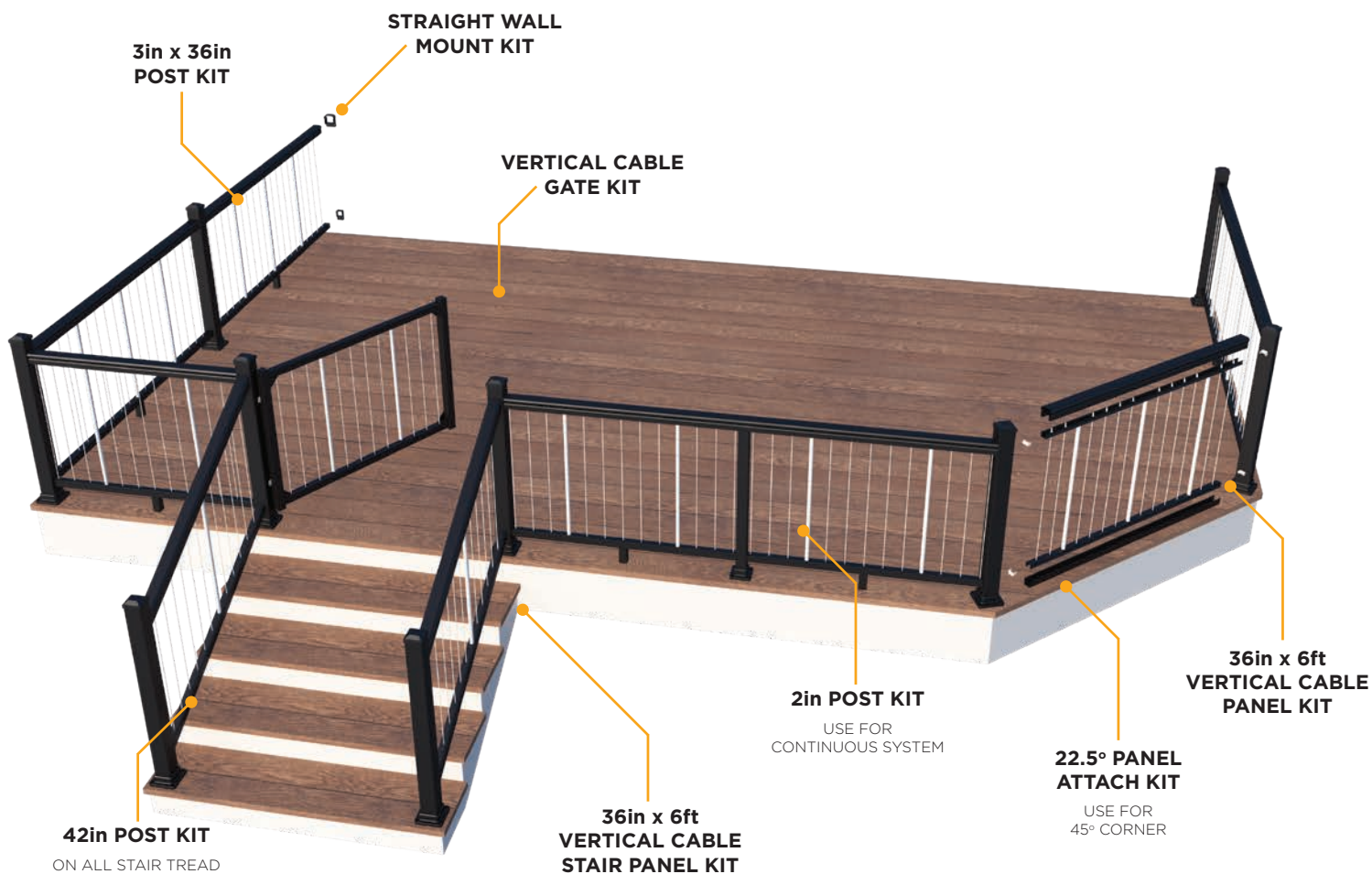
	P/N	Qty.
3in x 36in Post Kit	<input type="checkbox"/> HK441336	
3in x 42in Post Kit	<input type="checkbox"/> HK441342	
3in x 48in Post Kit	<input type="checkbox"/> HK441348	
2in x 36in Post Kit	<input type="checkbox"/> HK441236	
2in x 42in Post Kit	<input type="checkbox"/> HK441242	
2in x 48in Post Kit	<input type="checkbox"/> HK441248	

ADDITIONAL KITS

	Victorian P/N	Alta P/N	Qty.
Continuous Top Rail -18ft	<input type="checkbox"/> VT393118	<input type="checkbox"/> AL893118	
Straight Wall Mount Kit	<input type="checkbox"/> HC39100	<input type="checkbox"/> HC89100	
Deck/Stair Panel Attach Kit	<input type="checkbox"/> HC39500		
22.5° Panel Attach Kit	<input type="checkbox"/> HC06422		
45° Panel Attach Kit	<input type="checkbox"/> HC06445		
Rail Clip Jig/Touch-Up Paint Kit	<input type="checkbox"/> HJ39700		
48in W x 36in H Baluster Gate Kit (For openings up to 49in wide)	<input type="checkbox"/> HG07518		
48in W x 42in H Baluster Gate Kit (For openings up to 49in wide)	<input type="checkbox"/> HG07520		

● B=Black ● W=White ● Z=Bronze

VERTICAL CABLE RAILING PLANNER



Prior to construction, check with your local regulatory agency for special code requirements in your area. Common railing height is 36in or 42in. Never span posts more than 8ft on center for baluster railing systems and 6ft on center for glass railing systems. Always ensure there is proper blocking under each post as per installation instructions. Read installation instruction and view installation videos to get a complete understanding of how the Ultralox® products assemble. Written installation instructions and videos can be found online at [Ultralox.com](https://www.ultralox.com).

HELPFUL ORDERING INFORMATION:

1. Baluster section kits include attachment clips and screws. If panels are cut and two pieces are used for installation, a separate attachment kit must be purchased.
2. Anchors and fasteners to secure posts to concrete or wood are **NOT INCLUDED** in kits.
3. Maximum post spacing on deck for baluster railing is 8ft on center and glass railing is 6ft on center
4. If using 1/4in tempered glass panel kit, glass panels must be purchased separately from a local glass company.

IMPORTANT NOTES:

- Actual panel sizes: 6ft Panels = 69.43in; 8ft Panels = 91.31in.
- 3in Posts are required to reach 6ft & 8ft lengths.
- Stair railing panels are shipped at a 37° angle. Panels are adjustable and will accommodate 30-40° stair angles.
- **CAUTION:** Over-adjusting stair panels can cause loose and rattling balusters.
- 45° deck angles require 22.5° clips applied to each side of the post. The 22.5° clip kit is sold SEPARATELY.
- Using 2 posts at top of stairs is recommended if compound angle cut is required.

PREASSEMBLED VERTICAL CABLE PANELS

	Victorian P/N	Alta P/N	Qty.
36in x 6ft Vertical Cable Panel	<input type="checkbox"/> VC662306	<input type="checkbox"/> VC162306	
36in x 8ft Vertical Cable Panel	<input type="checkbox"/> VC662308	<input type="checkbox"/> VC162308	
42in x 6ft Vertical Cable Panel	<input type="checkbox"/> VC662406	<input type="checkbox"/> VC162406	
42in x 8ft Vertical Cable Panel	<input type="checkbox"/> VC662408	<input type="checkbox"/> VC162408	

PREASSEMBLED VERTICAL CABLE STAIR PANELS

	Victorian P/N	Alta P/N	Qty.
36in x 6ft Vertical Cable Stair Panel	<input type="checkbox"/> VC652306	<input type="checkbox"/> VC152306	
42in x 6ft Vertical Cable Stair Panel	<input type="checkbox"/> VC652406	<input type="checkbox"/> VC152406	

ALUMINUM POST KITS

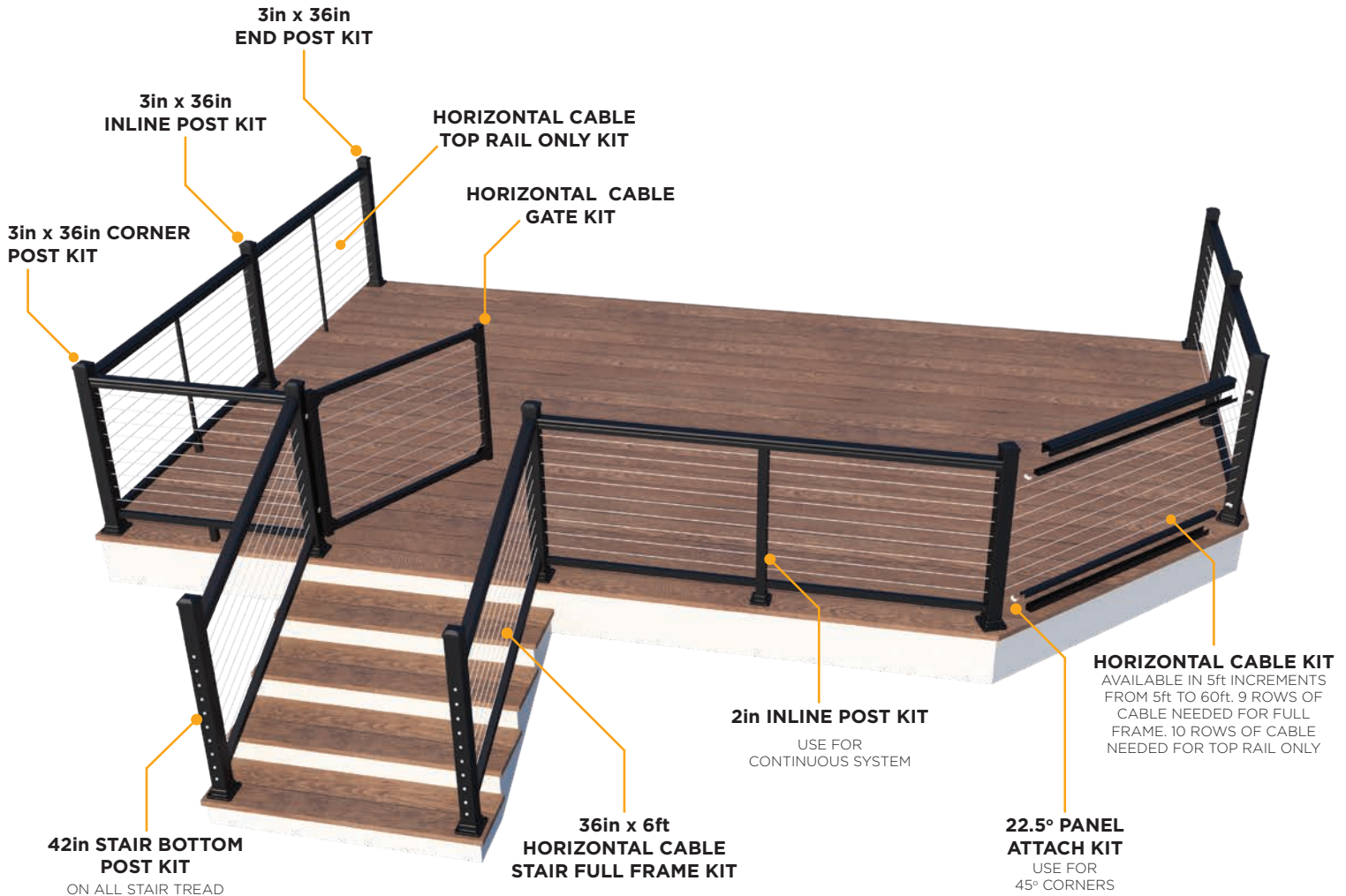
	P/N	Qty.
3in x 36in Post Kit	<input type="checkbox"/> HK441336	
3in x 42in Post Kit	<input type="checkbox"/> HK441342	
3in x 48in Post Kit	<input type="checkbox"/> HK441348	
2in x 36in Post Kit	<input type="checkbox"/> HK441236	
2in x 42in Post Kit	<input type="checkbox"/> HK441242	
2in x 48in Post Kit	<input type="checkbox"/> HK441248	

ADDITIONAL KITS

	Victorian P/N	Alta P/N	Qty.
Continuous Top Rail - 18ft	<input type="checkbox"/> VT393118	<input type="checkbox"/> AL893118	
Straight Wall Mount Kit	<input type="checkbox"/> HC39100	<input type="checkbox"/> HC89100	
Deck/Stair Panel Attach Kit	<input type="checkbox"/> HC39500		
22.5° Panel Attach Kit	<input type="checkbox"/> HC06422		
45° Panel Attach Kit	<input type="checkbox"/> HC06445		
Rail Clip Jig/Touch-Up Paint Kit	<input type="checkbox"/> HJ39700		
49in W x 36in H Vertical Cable Gate Kit (For openings up to 50in wide)	<input type="checkbox"/> CG601349		
49in W x 42in H Vertical Cable Gate Kit (For openings up to 50in wide)	<input type="checkbox"/> CG601449		

● B=Black ● W=White ● Z=Bronze

HORIZONTAL CABLE RAILING PLANNER



Prior to construction, check with your local regulatory agency for special code requirements in your area. Common railing height is 36in or 42in. Never span posts more than 8ft on center for baluster railing systems and 6ft on center for glass railing systems. Always ensure there is proper blocking under each post as per installation instructions. Read installation instruction and view installation videos to get a complete understanding of how the Ultralox® products assemble. Written installation instructions and videos can be found online at [Ultralox.com](https://www.ultralox.com).

HELPFUL ORDERING INFORMATION:

1. Baluster section kits include attachment clips and screws. If panels are cut and two pieces are used for installation, a separate attachment kit must be purchased.
2. Anchors and fasteners to secure posts to concrete or wood are **NOT INCLUDED** in kits.
3. Maximum post spacing on deck for baluster railing is 8ft on center and glass railing is 6ft on center
4. If using 1/4in tempered glass panel kit, glass panels must be purchased separately from a local glass company.

IMPORTANT NOTES:

- Actual panel sizes: 6ft Panels = 69.43in; 8ft Panels = 91.31in.
- 3in Posts are required to reach 6ft & 8ft lengths.
- Stair railing panels are shipped at a 37° angle. Panels are adjustable and will accommodate 30-40° stair angles.
- **CAUTION:** Over-adjusting stair panels can cause loose and rattling balusters.
- 45° deck angles require 22.5° clips applied to each side of the post. The 22.5° clip kit is sold SEPARATELY.
- Using 2 posts at top of stairs is recommended if compound angle cut is required.

HORIZONTAL CABLE FULL FRAME KITS

	Victorian P/N	Alta P/N	Qty.
36in x 6ft Horizontal Cable Deck Full Frame	<input type="checkbox"/> TF661306	<input type="checkbox"/> TF161306	
36in x 8ft Horizontal Cable Deck Full Frame	<input type="checkbox"/> TF661308	<input type="checkbox"/> TF161308	
42in x 6ft Horizontal Cable Deck Full Frame	<input type="checkbox"/> TF661406	<input type="checkbox"/> TF161406	
42in x 8ft Horizontal Cable Deck Full Frame	<input type="checkbox"/> TF661408	<input type="checkbox"/> TF161408	
36in x 6ft Horizontal Cable Stair Full Frame	<input type="checkbox"/> TF651306	<input type="checkbox"/> TF151306	
36in x 8ft Horizontal Cable Stair Full Frame	<input type="checkbox"/> TF651308	<input type="checkbox"/> TF151308	
42in x 6ft Horizontal Cable Stair Full Frame	<input type="checkbox"/> TF651406	<input type="checkbox"/> TF151406	
42in x 8ft Horizontal Cable Stair Full Frame	<input type="checkbox"/> TF651408	<input type="checkbox"/> TF151408	

HORIZONTAL CABLE TOP RAIL ONLY KITS

	Victorian P/N	Alta P/N	Qty.
36in x 6ft Horizontal Cable Deck Top Rail Only	<input type="checkbox"/> TR661306	<input type="checkbox"/> TR161306	
36in x 8ft Horizontal Cable Deck Top Rail Only	<input type="checkbox"/> TR661308	<input type="checkbox"/> TR161308	
42in x 6ft Horizontal Cable Deck Top Rail Only	<input type="checkbox"/> TR661406	<input type="checkbox"/> TR161406	
42in x 8ft Horizontal Cable Deck Top Rail Only	<input type="checkbox"/> TR661408	<input type="checkbox"/> TR161408	
36in x 6ft Horizontal Cable Stair Top Rail Only	<input type="checkbox"/> TR651306	<input type="checkbox"/> TR151306	
36in x 8ft Horizontal Cable Stair Top Rail Only	<input type="checkbox"/> TR651308	<input type="checkbox"/> TR151308	
42in x 6ft Horizontal Cable Stair Top Rail Only	<input type="checkbox"/> TR651406	<input type="checkbox"/> TR151406	
42in x 8ft Horizontal Cable Stair Top Rail Only	<input type="checkbox"/> TR651408	<input type="checkbox"/> TR151408	

HORIZONTAL CABLE POST KITS

	2in Post	3in Post	Qty.
36in Horizontal Cable End Post Kit	<input type="checkbox"/> PC6E1236	<input type="checkbox"/> PC6E1336	
36in Horizontal Cable Inline Post Kit	<input type="checkbox"/> PC6I1236	<input type="checkbox"/> PC6I1336	
36in Horizontal Cable Corner Post Kit	<input type="checkbox"/> PC6C1236	<input type="checkbox"/> PC6C1336	
42in Horizontal Cable Inline Stair Post Kit	<input type="checkbox"/> PC6S1242	<input type="checkbox"/> PC6S1342	
42in Horizontal Cable Stair Bottom Post Kit	<input type="checkbox"/> PC6B1242	<input type="checkbox"/> PC6B1342	
42in Horizontal Cable End Post Kit	<input type="checkbox"/> PC6E1242	<input type="checkbox"/> PC6E1342	
42in Horizontal Cable Inline Post Kit	<input type="checkbox"/> PC6I1242	<input type="checkbox"/> PC6I1342	
42in Horizontal Cable Corner Post Kit	<input type="checkbox"/> PC6C1242	<input type="checkbox"/> PC6C1342	
48in Horizontal Cable Inline Stair Post Kit	<input type="checkbox"/> PC6S1248	<input type="checkbox"/> PC6S1348	
48in Horizontal Cable Stair Bottom Post Kit	<input type="checkbox"/> PC6B1248	<input type="checkbox"/> PC6B1348	

HORIZONTAL CABLE KITS

	P/N	Qty.
5ft - 60ft Horizontal Cable Kit	<input type="checkbox"/> CW60300	

ADDITIONAL KITS

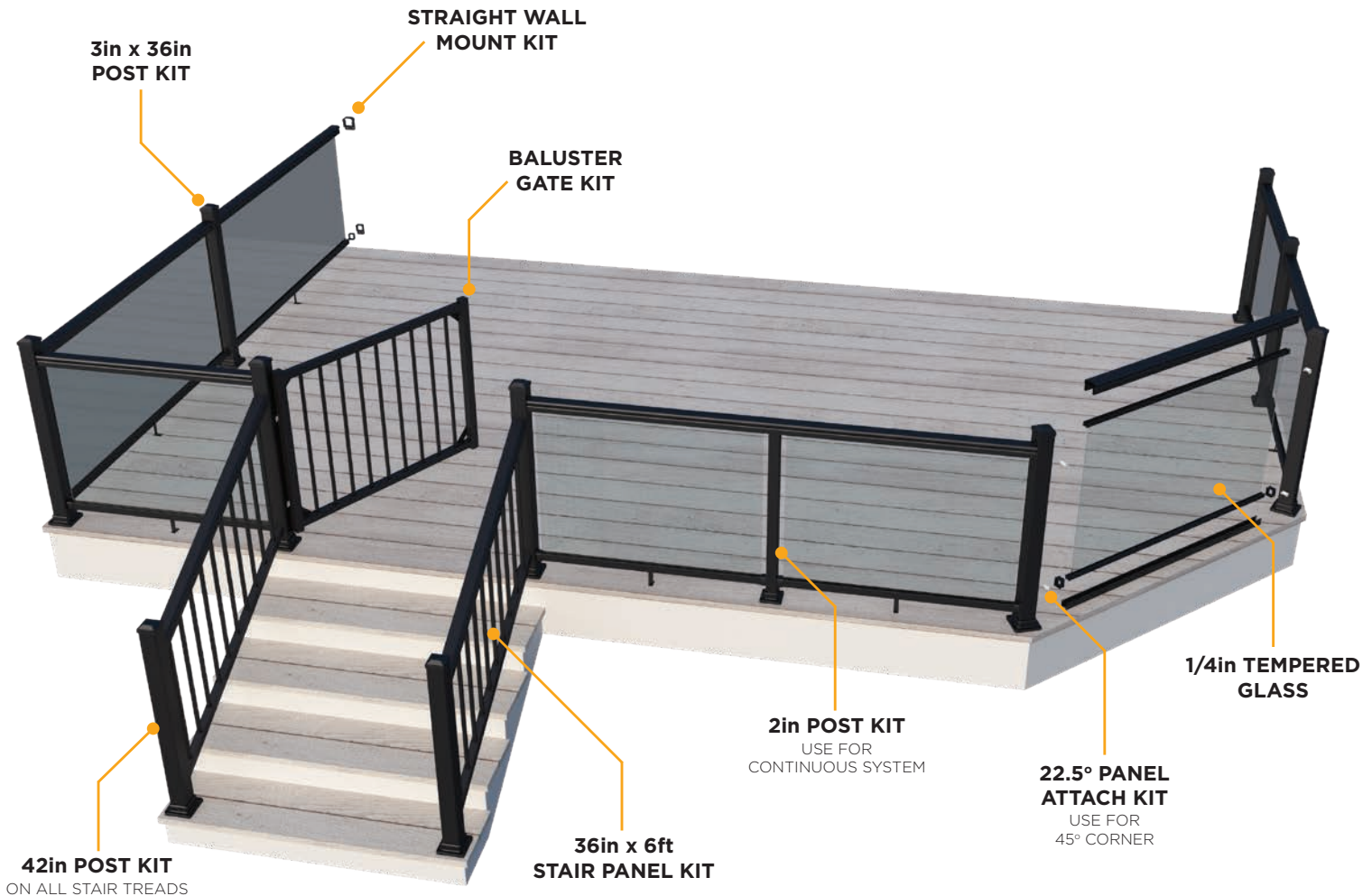
	Victorian P/N	Alta P/N	Qty.
Top Rail Snap -18ft	<input type="checkbox"/> VT393118	<input type="checkbox"/> AL893118	
Deck/Stair Panel Attach Kit	<input type="checkbox"/> HC39500		
22.5° Panel Attach Kit	<input type="checkbox"/> HC06422		
Rail Clip Jig/Touch-Up Paint Kit	<input type="checkbox"/> HJ39700		
49in W x 36in H Horizontal Cable Gate Kit (For openings up to 50in wide)	<input type="checkbox"/> CG681349		
49in W x 36in H Horizontal Cable Gate Kit (For openings 50in wide)	<input type="checkbox"/> CG681349		

● B=Black ● W=White ● Z=Bronze

CABLE TOOLS

	P/N	Qty.
Cable Gripper Tool	<input type="checkbox"/> TC097606	
Horizontal Cable Tool Kit	<input type="checkbox"/> TK32750	
Stainless Steel Cable Cutter	<input type="checkbox"/> TC697703	

GLASS RAILING PLANNER



Prior to construction, check with your local regulatory agency for special code requirements in your area. Common railing height is 36in or 42in. Never span posts more than 8ft on center for baluster railing systems and 6ft on center for glass railing systems. Always ensure there is proper blocking under each post as per installation instructions. Read installation instruction and view installation videos to get a complete understanding of how the Ultralox® products assemble. Written installation instructions and videos can be found online at [Ultralox.com](https://www.ultralox.com).

HELPFUL ORDERING INFORMATION:

1. Glass section kits include attachment clips and screws. If panels are cut and two pieces are used for installation, a separate attachment kit must be purchased.
2. Anchors and fasteners to secure posts to concrete or wood are **NOT INCLUDED** in kits.
3. Maximum post spacing on deck for baluster railing is 8ft on center and glass railing is 6ft on center
4. If using 1/4in tempered glass panel kit, glass panels must be purchased separately from a local glass company.

IMPORTANT NOTES:

- Actual glass frame section length: 6ft Panels = 69.43in.
- 3in posts are required to reach 6ft lengths.
- Baluster stair railing panels are shipped at a 37° angle. Panels are adjustable and will accommodate 30-40° stair angles.
- **CAUTION:** Over-adjusting stair panels can cause loose and rattling balusters.
- 45° deck angles require 22.5° clips applied to each side of the post. The 22.5° clip kit is sold SEPARATELY.
- Using 2 posts at top of stairs is recommended if compound angle cut is required.

GLASS FRAME SECTIONS

	Victorian P/N	Alta P/N	Qty.
6ft Top Rail Snap	<input type="checkbox"/> VT393106	<input type="checkbox"/> AL893106	
6ft Aluminum Frame for Full 1/4in Tempered Glass Panel	<input type="checkbox"/> HG031206		
1/4in Tempered Glass Panel		N/A	

PREASSEMBLED BALUSTER STAIR PANELS

	Victorian P/N	Alta P/N	Qty.
36in x 6ft Baluster Stair Panel	<input type="checkbox"/> HS362306	<input type="checkbox"/> HS862306	
36in x 8ft Baluster Stair Panel	<input type="checkbox"/> HS362308	<input type="checkbox"/> HS862308	
42in x 6ft Baluster Stair Panel	<input type="checkbox"/> HS362406	<input type="checkbox"/> HS862406	
42in x 8ft Baluster Stair Panel	<input type="checkbox"/> HS362408	<input type="checkbox"/> HS862408	
36in x 6ft Continuous Baluster Stair Panel	<input type="checkbox"/> HS062306		
36in x 8ft Continuous Baluster Stair Panel	<input type="checkbox"/> HS062308		
42in x 6ft Continuous Baluster Stair Panel	<input type="checkbox"/> HS062306		
42in x 8ft Continuous Baluster Stair Panel	<input type="checkbox"/> HS062308		

ALUMINUM POST KITS

	P/N	Qty.
3in x 36in Post Kit	<input type="checkbox"/> HK441336	
3in x 42in Post Kit	<input type="checkbox"/> HK441342	
3in x 48in Post Kit	<input type="checkbox"/> HK441348	
2in x 36in Post Kit	<input type="checkbox"/> HK441236	
2in x 42in Post Kit	<input type="checkbox"/> HK441242	
2in x 48in Post Kit	<input type="checkbox"/> HK441248	

ADDITIONAL KITS

	Victorian P/N	Alta P/N	Qty.
Continuous Top Rail - 18ft	<input type="checkbox"/> VT393118	<input type="checkbox"/> AL893118	
Straight Wall Mount Kit	<input type="checkbox"/> HC39100	<input type="checkbox"/> HC89100	
Glass Panel Attach Kit	<input type="checkbox"/> HC03400		
22.5° Glass Panel Attach Kit	<input type="checkbox"/> HC03422		
45° Panel Attach Kit	<input type="checkbox"/> HC06445		
Rail Clip Jig/Touch-Up Paint Kit	<input type="checkbox"/> HJ39700		
48in W x 36in H Baluster Gate Kit (For openings up to 49in wide)	<input type="checkbox"/> HG07518		
48in W x 42in H Baluster Gate Kit (For openings up to 49in wide)	<input type="checkbox"/> HG07520		

● B=Black ● W=White ● Z=Bronze

SYSTEM EVALUATION

Ultralox® Aluminum Baluster Systems have been evaluated for structural integrity by an independent laboratory as per ICC-ES AC273 – acceptance criteria (approved/revised 2024) for handrails and guards. The Ultralox aluminum railing systems have been evaluated with 1/2in x 3/4in aluminum balusters (6063-T5) assembled using the patented Ultralox Interlocking® assembly process by which guardrail infill components are press-locked together. Ultralox® 1/4in tempered glass panel system (ANSI Z97.1 tempered glass) has been evaluated with a total railing span of 72in with an Ultralox 3in post attached at each end and secured to a concrete substrate with 4 - Ultralox 1/4in x 3in Concrete Anchors (available from Ultralox). When the guardrail is installed in configurations other than described in the installation instructions, the installation configuration and fastening detail must be specified by a licensed engineer.



**ULTRALOX®
VICTORIAN
TOP RAIL
AND ALTA
TOP RAIL:
MAX SPAN
91.31 IN.**

When Ultralox aluminum railing systems are assembled under the conditions described above, the railings meet the guardrail requirements of 1607.7.1.1 of the 2024 International Residential Code (IRC).

When the Ultralox guardrail is installed in configurations other than described above, each installation shall be designed using numerical calculation methods by a registered professional engineer licensed in the state in which the project is constructed. Sealed shop drawings shall be made available to interested parties to demonstrate compliance with application in which the project is constructed.

If Ultralox railings are installed contrary to the specific assembly described above and sealed engineering drawings are not available, then the railing is intended for decorative purposes only and cannot be used in applications where structural railing systems are required by local or international building code.

The diagrams and instructions provided with each system are for illustration purposes only and are not meant to replace a licensed professional. Any construction or use of the product must be in accordance with all local zoning and/or building codes. The consumer assumes all risks and liability associated with the construction or use of this product. The consumer or contractor should take all necessary steps to ensure the safety of everyone involved in the project, including, but not limited to, wearing the appropriate safety equipment. Except as contained in the written limited warranty. Ultralox does not provide any other warranty; either expressed or implied, and shall not be liable for any damages, including consequential damages.

20-YEAR LIMITED WARRANTY

Ultralox® warrants its railing products to be free from manufacturing defects in material and workmanship to the original consumer purchaser. In addition to manufacturing defects, this warranty covers cracking, peeling and blistering of the finish of our products.

This warranty does not cover damage caused by abnormal or improper use, improper product installation, accidents, alterations, welding, neglect, damage by lawn care equipment, abrasion, harsh chemicals, pool chemicals, lawn fertilizers, pet urine, snow and ice removal chemicals, air pollutants, improper service or lack of and damage caused by fire, flood or acts of God. This warranty does not cover corrosion from cuts, scratches, dents or nicks. Products located 1 mile or less from any coastline shall qualify for a 10-year Limited Warranty if an AkzoNobel Interpon 700 polyester epoxy primer (EL015Q) is applied prior to the application of the above Interpon D2000 Super Polyester Architectural Powder Coating (Ultralox Coastal Coating). AkzoNobel Interpon 700 polyester epoxy primer (EL015Q) powder coating shall only be applied by approved Interpon D applicators as per above instructions. Products in direct contact with saltwater do not qualify for any warranty.

REGISTER YOUR PRODUCT

We want to be sure you have the safety and security of knowing that your Ultralox® product is here to stay. To activate the warranty on your product, please complete the registration form online within sixty (60) days of your purchase date. Please visit: Ultralox.com.



CLAIM PROCEDURE

To make a claim under this Warranty to receive replacement product, the original consumer must, within 90 days of actual or constructive notice of any covered defect in the product, do the following:

- (1) Prepare a letter that includes the following:
 - a. A list of the number of pieces and the size of each piece for which the claim is made.
 - b. Proof of Purchase of the products, as shown on the original invoice.
 - c. Proof of Warranty – Original purchaser or homeowner must have registered their product online at Ultralox.com within 60 days of purchase date.

- (2) Mail the above to:

Ultralox® Railing Systems
2737 West Service Road, Eagan, MN 55121

- (3) Email to: warranty@ultralox.com

CONDITIONS AND EXCLUSIONS OF THIS WARRANTY:

CLEANING AND CARE INSTRUCTION MUST BE FOLLOWED TO HONOR WARRANTY.

THIS WARRANTY IS NOT TRANSFERABLE. THE AMOUNT OF YOUR RESTITUTION, IF ELIGIBLE, WILL NOT INCLUDE LABOR TO REMOVE THE EXISTING PRODUCT OR INSTALL ANY REPLACEMENT COMPONENTS, SHIPPING CHARGES, SALES TAX OR ANY OTHER CHARGES, NOR WILL ULTRALOX® PROVIDE SUCH LABOR OR SERVICE.

THIS LIMITED WARRANTY IS IN LIEU OF ALL OTHER EXPRESS WARRANTIES. ULTRALOX® MAKES NO OTHER EXPRESS WARRANTIES AND DOES NOT AUTHORIZE ANY OTHER PERSON OR AGENT TO MAKE ANY OTHER EXPRESS WARRANTIES. ULTRALOX® NEITHER ASSUMES NOR AUTHORIZES ANY OTHER LIABILITY OR OBLIGATION IN WARRANTY, INCLUDING WITHOUT LIMITATION, THE IMPLIED WARRANTIES OF MERCHANTABILITY AND FITNESS FOR A PARTICULAR PURPOSE WITH RESPECT TO THEIR PRODUCTS. IN NO EVENT SHALL ULTRALOX® BE LIABLE FOR ANY CONSEQUENTIAL, SPECIAL OR INCIDENTAL DAMAGES ARISING OUT OF OR CONNECTED WITH THE PURCHASE OR USE OF THEIR PRODUCTS OR FOR ANY BREACH OF WARRANTY.

SOME STATES DO NOT ALLOW LIMITATIONS ON HOW LONG AN IMPLIED WARRANTY LASTS OR THE EXCLUSION OR LIMITATION OF INCIDENTAL OR CONSEQUENTIAL DAMAGES, SO THE ABOVE LIMITATIONS OR EXCLUSIONS MAY NOT APPLY TO YOU. THIS WARRANTY GIVES YOU SPECIFIC LEGAL RIGHTS, AND YOU MAY HAVE OTHER RIGHTS THAT VARY FROM STATE TO STATE. THIS WARRANTY IS APPLICABLE ONLY TO SYSTEMS INSTALLED WITHIN THE CONTINENTAL UNITED STATES AND CANADA.

CLEANING AND MAINTENANCE GUIDE

BACKGROUND

Ultralox® architectural powder coatings are organic coatings that must be regularly cleaned and maintained in order to ensure the decorative and protective properties of the coatings are retained. Records of all cleaning schedules and frequencies shall be kept and maintained by the customer according to the process outlined below and shall be available to Ultralox® upon request.

CLEANING METHOD

Usual maintenance of Products must adhere to the following steps:

- Clean using an appropriate cleaning product, as defined below.
- Rinse with clear water.
- Wipe with a soft cloth.
- All surfaces shall be cleaned using a soft cloth or sponge, and no cloth shall be harsher than natural bristle brushes.

If the Product is subject to any hazardous and unusual environmental factors or is located within one (1) mile of the seashore, an estuary or marine environment, Ultralox® must be consulted on an individual project basis for best maintenance practices.

CLEANING PRODUCTS

Before cleaning, the customer must consult and adhere to the underlying instructions contained within the Product Data Sheet available online at Ultralox.com.

Usual maintenance cleaning may be done using water with a mild detergent (pH 5 to 8).

If atmospheric pollution has resulted in heavy soiling of the coating, some stains or marks may require stronger domestic products, such as alcohol, petroleum spirits, white spirits or bleach diluted to five percent (5%). In this instance, the customer must rinse the coating immediately after using the cleaning product.

In no circumstance shall any abrasive cleaner, polish or cleaners containing ketones or ether be used.

FREQUENCY

For all Products located within one (1) mile of the seashore:

- Customer shall clean the Product six (6) times per year.
- The cleaning cycle shall commence within two (2) months of installation.
- Cleaning shall be conducted in intervals not to exceed two (2) months.
- Customer shall maintain fully documented records throughout the Warranty term.

For all Products located more than one (1) mile of the seashore:

- Customer shall clean the Product four (4) times per year.
- The cleaning cycle shall commence within three (3) months of installation.
- Cleaning shall be conducted in intervals not to exceed three (3) months.
- Customer shall maintain fully documented records throughout the Warranty term.

ADDITIONAL FACTORS

Damage from installation, mechanical processes, jig marks and other related defects must be repaired immediately in order for the Warranty to remain in effect.

Protective tapes used in installation must be a low-tack quality and must not be left in contact with the surface for more than one (1) month.

Ultralox® must approve all sealants and mastics prior to installation in order for Warranty to remain in effect.



ABOUT ULTRALOX®

🌐 www.ultralox.com

✉ info@ultralox.com

☎ 888-685-4005

📍 2737 West Service Road,
Eagan, MN 55121

Ultralox® offers a variety of railing solutions such as: Standard Baluster Railing with optional Mid-Rail or Open Mid-Rail, Full Glass panel, Vertical and Horizontal Cable Railing systems. All railings have been tested and certified to Commercial building codes throughout the United States, Australia and Canada.