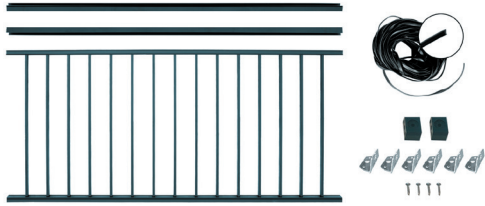


# INSTALLATION INSTRUCTIONS

# SCREEN RAIL SYSTEM

## KITS AVAILABLE



### 6FT W SCREEN RAIL PANEL KITS

- 1 - 6ft W Screen Rail Panel  
(Actual Length = 69.43in)
- 1 - 6ft Top Rail Snap
- 1 - 6ft Perimeter Channel
- 2 - Locating Blocks
- 6 - L Brackets
- 4 - #8 x 1in Self-tapping Screws
- 1 - 30ft x.315in Flat Screen Spline
- Installation Instructions
- Available in 36in and 42in H Panels



### SCREEN RAIL POST KITS

- 1 - Screen Post
- 4 - L Brackets
- 8 - #8 x 1in Self-tapping Screws
- Installation Instructions
- Used in conjunction with railing panel kit if opening is over 6ft
- Available in 8.5ft and 12ft High Kits



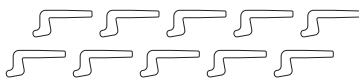
### SCREEN RAIL PERIMETER CHANNEL KITS

- 2 - Perimeter Channels
- 8 - L Brackets
- 1 - 30ft x.315in Flat Screen Spline
- Installation Instructions
- Available in 8.5ft and 12ft High Kits



### SCREEN RAIL DOOR FRAME KITS

- 2 - Screen Posts
- 1 - Two-Piece 3ft Screen Post
- 1 - 3ft Perimeter Channel
- 4 - Locating Blocks
- 3 - L Brackets
- 8 - #8 x 1in Self-tapping Screws
- 1 - 30ft x .315in Flat Screen Spline
- Installation Instructions
- Available in 8.5ft and 12ft High Kits



### SCREEN HOLDER KIT

- Use to temporarily hold screen fabric in place when securing screen in spline channels.
- 10 pieces

# INSTALLATION INSTRUCTIONS

# SCREEN RAIL SYSTEM

## SAFETY NOTES

- " WHEN CUTTING METAL, ALWAYS WEAR PROPER SAFETY EYEWEAR (AS WELL AS ANY OTHER PROPER SAFETY WEAR).
- " REMOVE ALL BURRS FROM CUT ENDS AND APPLY TOUCH UP PAINT PRIOR TO INSTALLATION.
- " USE OF A NON-FERROUS METAL BLADE IS RECOMMENDED.

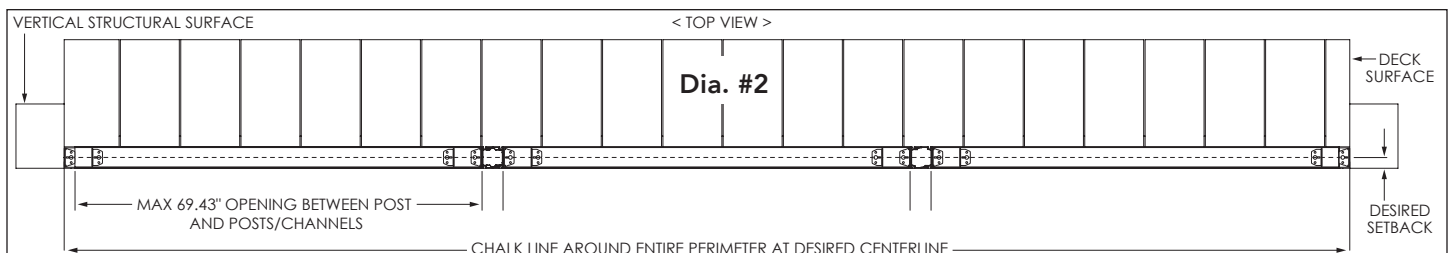
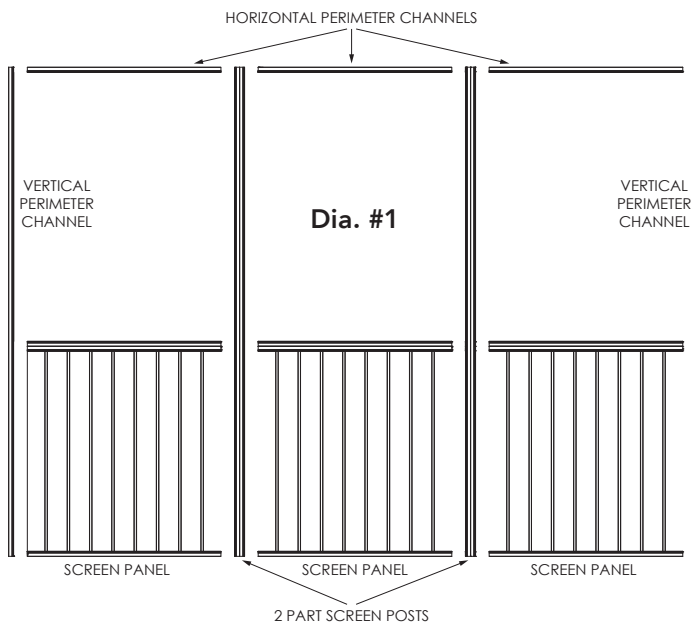
**IMPORTANT:** THE SCREEN PORCH SYSTEM IS APPROVED ONLY FOR RESIDENTIAL APPLICATIONS. CAREFULLY READ AND UNDERSTAND ALL INSTRUCTIONS BEFORE BEGINNING INSTALLATION.

## TOOLS REQUIRED

- Cordless Drill
- Pencil
- Safety Glasses
- Level
- Tape Measure
- Miter Saw with Non-Ferrous Blade
- 6" #2 Sq. Drive Bit
- Screen Spline Rolling Tool
- Chalk Line Tool or Speed Square
- Safety/Utility Knife or Scissors

## STEP 1: MEASURE ALL OPENINGS AND COUNT SCREEN KITS AND POSTS

- Measure screen enclosure openings. For every 69.43", count one screen rail kit. Rail sections are 69.43" wide and posts are 2" wide, so maximum on center span is 71.43". Add one screen post kit between each screen rail.
- Determine the number of screen porch perimeter channel kits needed. Measure the top horizontal length of the openings as well as the vertical surfaces (Dia. #1 & #2). Kits are available in (2) 8.5' sections and (2) 12' sections.
- Order the proper number of screen kits and posts.



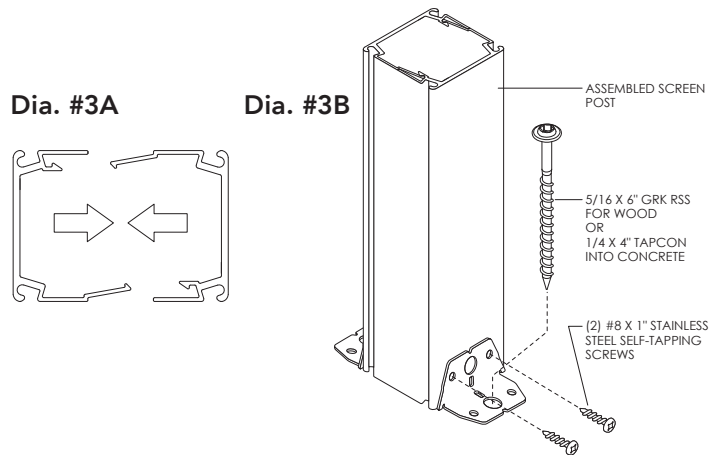
FOR QUESTIONS OR ASSISTANCE,  
VISIT MANUFACTURER'S WEBSITE.

## STEP 2: MARK CENTERLINES FOR PERIMETER CHANNELS AND SCREEN POSTS

- Determine desired setback of perimeter channel to determine where centerline should be. (Dia. #2)
- Snap chalk lines or use a speed square to mark the centerlines for proper alignment of the perimeter channel and screen posts. Chalk lines should be snapped on all surfaces (top, bottom and sides) of porch openings.

## STEP 3: MEASURE, MARK AND PLACE SCREEN POSTS

- Mark locations of all screen posts (Dia. #2). Posts can be placed up to 69.43" apart. Hold the posts in place and to mark both sides with a pencil line on the lower horizontal structural surface. Using a level, locate and mark the top of the post on the upper horizontal structural surface.
- **Note:** Posts are built with two pieces and should be snapped together before installation. (Dia. #3A) Posts have spline channels on both sides, so there is no "inside" or "outside". Cut left and right sides of post to fit vertical opening of porch. **Caution:** Always use a non-ferrous metal blade for cutting posts, screen rails and perimeter channels.
- Four screen L brackets are required for each post; two on the top and two on the bottom. Set one screen L bracket centered on chalk line and on the left line of the marked post location. Fasten to deck surface using correct screws as shown (Dia. #3B).
- Fasten the second screen L bracket on the upper horizontal structural surface, centered on chalk line and on the left line of the marked post location.
- Put post in place and secure to screen L bracket with (2) #8 X 1" stainless steel self-tapping screws.
- Fasten two screen L brackets on the right side (top and bottom), butted up to the screen post. (Dia. #3B)
- Repeat these steps for all other posts.

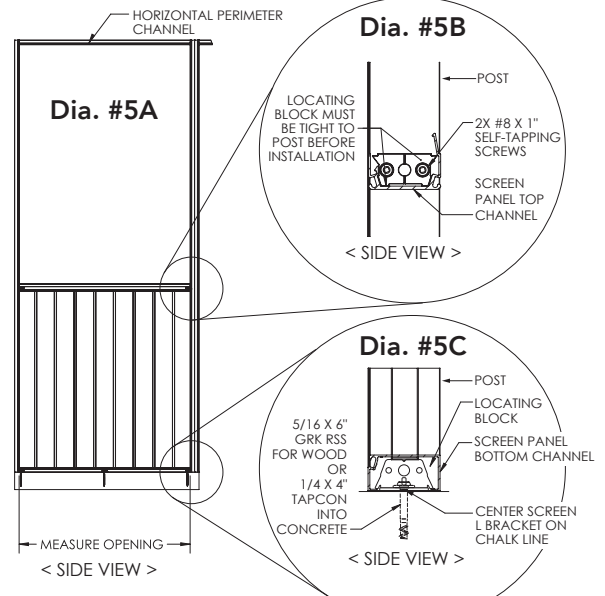
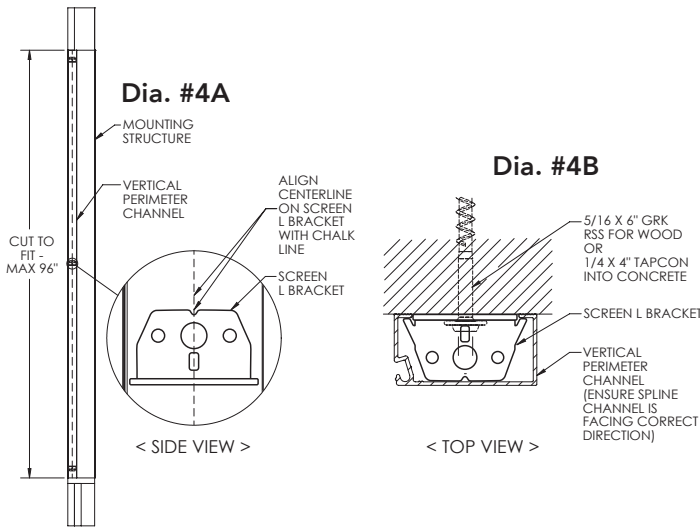


# INSTALLATION INSTRUCTIONS

# SCREEN RAIL SYSTEM

## STEP 4: INSTALL VERTICAL PERIMETER CHANNELS

- Measure, mark and cut perimeter channels to fit vertical sides of porch openings. **Caution:** always use a non-ferrous metal blade for cutting posts, screen rails and perimeter channels.
- Fasten screen L brackets centered on chalk lines, near each end of vertical perimeter channels. Then add screen L brackets every 36" using correct screws as shown (Dia. #4A & #4B).
- **IMPORTANT NOTES:** Make sure the sides with the lips are facing up on screen L brackets so perimeter channels can snap onto them. It is critical to place screen L brackets in straight lines. If they are not aligned, it is difficult to snap perimeter channels into place. Do not over-tighten screen L brackets to vertical and horizontal perimeters – this can cause them to sink into materials and make it difficult to snap perimeter channels in place.
- Snap vertical perimeter channels onto screen L brackets, **being mindful of direction of screen spline grooves.**



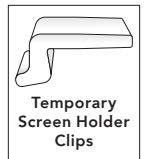
## STEP 7: INSTALL HORIZONTAL PERIMETER CHANNELS

- Measure, mark and cut perimeter channels to fit top horizontal sections of porch openings (Dia. #4A). Perimeter channels should be placed in openings between all posts/structural surfaces. **Caution:** always use a non-ferrous metal blade for cutting posts, screen rails and perimeter channels.
- Fasten screen L brackets centered on chalk lines, near each end of horizontal perimeter channels. Then add locating blocks every 36" using correct screws as shown.
- **Note:** It is critical to place screen L brackets in straight lines. If they are not aligned, it is difficult to snap perimeter channels into place.
- Snap horizontal perimeter channels onto screen L brackets, **being mindful of direction of screen spline grooves.**
- Repeat steps above until all screen posts, screen rail kits and perimeter channels are installed.

## STEP 8: INSTALL SCREENS

**Note:** Screen installation may vary by material and brand. See manufacturer's instructions to verify steps below.

- Measure sections of screen material (purchased separately) to be placed on inside of screen rail system.
- Lay the screen fabric over the perimeter channel so that it overlaps the spline channel. Pull out screen fabric so it's mostly taut and temporarily hold it in place with screen holder clips. Adhesive tape may also be used.
- Secure Screen to Spline: Use a spline roller to press the flat spline and screen into the spline channel, pulling the screen tight at the same time.
- Trim Excess Screen. Once your screen is secure in the spline channel, cut off any overhang with scissors or a utility knife.



## STEP 5: INSTALL SCREEN PORCH PANELS

- Measure, mark and cut Screen Porch Panel to fit horizontal opening between structural surfaces and/or screen posts (Dia. #5A). **Note:** always use a non-ferrous metal blade for cutting posts and screen rails. Touch up paint may be required (sold separately) for cut ends.
- On the deck/porch surface, fasten locating blocks centered on chalk line, near each end of screen panel (Dia. #5C). Add locating blocks every 36" using correct screws as shown.
- Snap Screen Porch Panel onto locating blocks. **Note:** Screen Porch Panels have a top and bottom. **Be mindful of direction of screen spline grooves.**
- Insert locating blocks into top rail, and secure to posts using provided 2X #8 x 1" self-tapping screws (Dia. #5B). **Note:** When securing to structural surfaces other than posts, pre-drilling and use of exterior grade screws may be required.
- Repeat steps above for remaining Screen Porch Panels.

## STEP 6: INSTALL TOP RAIL COVERS

Measure, mark and cut top rail covers, and snap onto top rails. Touch up paint may be required (sold separately) for cut ends.

## STEP 9: INSTALL SCREEN PORCH DOOR FRAME KIT (IF APPLICABLE)

- Determine desired location for screen door.
- Read and have a thorough understanding of the screen door manufacturer's installation instructions.
- Install 2 – 2 piece Screen Porch posts at appropriate width apart to allow for screen door and all mounting hardware to fit between. Refer to step 3 for post installation instructions.
- Measure, cut and install the 2 piece door header (Refer to step 3).
- Measure, cut and install the upper perimeter channel (Refer to step 7).
- Install screen door in opening as per manufacturer's instructions.
- Install screen in opening above door (Refer to step 8).