

LOOK BOOK



 **ULTRALOX**[®]
INTERLOCKING TECHNOLOGY

U WHO WE ARE



Visit [Ultralox.com](https://www.ultralox.com) for full product lineup, technical data and resources.

ABOUT ULTRALOX®

- ◆ Headquartered in Eagan, Minnesota
- ◆ 80 machines in 35 states
- ◆ Local Fabrication and Installation
- ◆ More quality control over the end product
- ◆ Easier/Less-costly to transport
- ◆ Ability to customize
- ◆ Fast and Easy Installation

OUR MISSION

Ultralox Interlocking® Technology prides itself on bringing you more control over your lead times and profit, allowing you to build what you need when you need it. We offer a multifaceted line of aluminum railing and fencing for both commercial and residential projects including several styles that can be used on any project.

All our aluminum products are also accurately documented and meet the highest safety and durability standards in the industry.

WHY ULTRALOX®?

ULTRALOX QUALITY

Ultralox Interlocking® Technology is the only aluminum railing manufacturer to achieve an ICC-ES ESR rating

What is an ICC-ER Evaluation?

ICC Evaluation Service (ICC-ES) is the industry leader in performing technical evaluations of building products, materials, and systems for code compliance. Due to its diligence and unparalleled engineering experience, ICC-ES is the most widely accepted evaluation agency in the nation.

You can view the Ultralox ICC-ES report by visiting Ultralox.com/testing.

Ultralox is also proud to be approved with the Texas Department of Insurance as well as approved for project in Los Angeles, California.



20-YEAR LIMITED WARRANTY

Ultralox warrants its railing products to be free from manufacturing defects in material and workmanship to the original consumer purchaser. In addition to manufacturing defects, this warranty covers cracking, peeling, and blistering of the finish of our products. Subject to maintenance requirements.

Read more about our warranty and maintenance requirements at Ultralox.com/warranty.



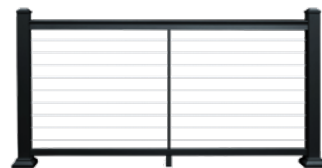
ULTRALOX® INTERLOCKING SYSTEM



BALUSTER RAILING



**VERTICAL
CABLE RAILING**



**HORIZONTAL
CABLE RAILING**



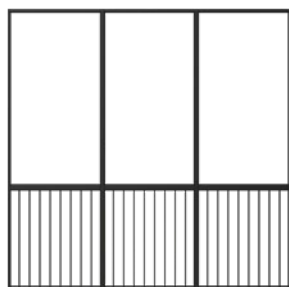
GLASS RAILING



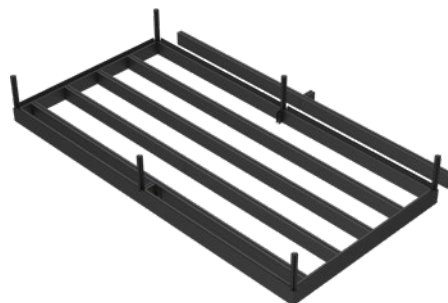
FENCING



ADA HANDRAIL



SCREEN RAIL



**ALUMINUM
FRAMING SYSTEM**

POWDER COATING COLOR OPTIONS

Our railing, fencing and decking systems are complete with highest quality architectural grade powder coating in multiple color options, giving you reliability and durability with minimal maintenance. Available in:



BLACK



WHITE

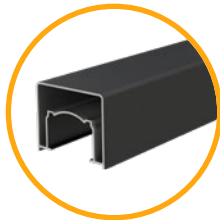


BRONZE

TOP RAIL OPTIONS



VICTORIAN



ALTA

Post height options:

- ♦ 36in
- ♦ 42in
- ♦ 48in

Post mount options:

- ♦ Surface Mount
- ♦ Fascia Mount

POST SYSTEM OPTIONS

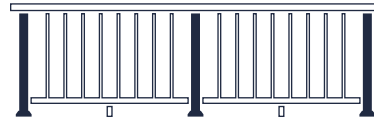


POST-TO-POST

3in End Post - 3in Inline Post



3in Post



CONTINUOUS

2in End Post - 2in Inline Post



2in Post

LIGHTING OPTIONS

INDIRECT LIGHT



PERIMETER LIGHT



SOLAR PERIMETER LIGHT



LOW PROFILE POST CAP



BALUSTER RAILING

Our aluminum baluster railing system is strong enough for any commercial application. Spanning up to 8ft, the durable aluminum construction and simple assembly ensures a professional fit and finish to any project.



PANEL SIZE OPTIONS

HEIGHT		LENGTH	ACTUAL SIZE	
36in	X	6ft	33.5in H X 69.43in W	
36in	X	8ft	33.5in H X 91.31in W	
42in	X	6ft	39.0in H X 69.43in W Deck Panels	41.43in H X 69.43in W Stair Panels
42in	X	8ft	39.0in H X 91.31in W Deck Panels	41.43in H X 91.31in W Stair Panels

Baluster Railing available for deck and stair applications.

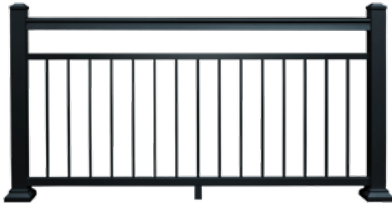
BALUSTER STYLE OPTIONS



**STANDARD
BALUSTER RAILING**



**STANDARD MID-RAIL
BALUSTER RAILING**



**OPEN MID-RAIL
BALUSTER RAILING**



**DOUBLE OPEN MID-RAIL
BALUSTER RAILING**

For all style options, visit [Ultralox.com](https://www.ultralox.com)

CABLE RAILING

Newest to the Ultralox railing family are our cable railing systems. Spanning up to 8ft, available in both horizontal and vertical cable, our cable railings are sure to impress.



PANEL SIZE OPTIONS

HEIGHT		LENGTH	ACTUAL SIZE
36in	X	6ft	33.5in H X 69.43in W
36in	X	8ft	33.5in H X 91.31in W
42in	X	6ft	39.0in H X 69.43in W
42in	X	8ft	39.0in H X 91.31in W

Cable Railing available for deck and stair applications.

BALUSTER STYLE OPTIONS



**VERTICAL
CABLE RAILING**



**HORIZONTAL CABLE
FULL FRAME**



TENSION BLOCK

To adjust tension of pre-assembled vertical cable



CABLE KITS

Easy to install and tension horizontal cable

CABLE TOOLS

for horizontal
cable systems



GLASS RAILING

With our fully aluminum, 1/4in or 7/16in tempered glass railing system, you not only get the safety of our commercial grade railing but also keep every great view. Spanning up to 6ft, our strong, drop-in locking system ensures safety and beauty for years to come. Glass panels are not included.





SIZE OPTIONS AVAILABLE

HEIGHT		LENGTH	ACTUAL SIZE
36in	X	6ft	33.5in H X 69.43in W
42in	X	6ft	39.0in H X 69.43in W



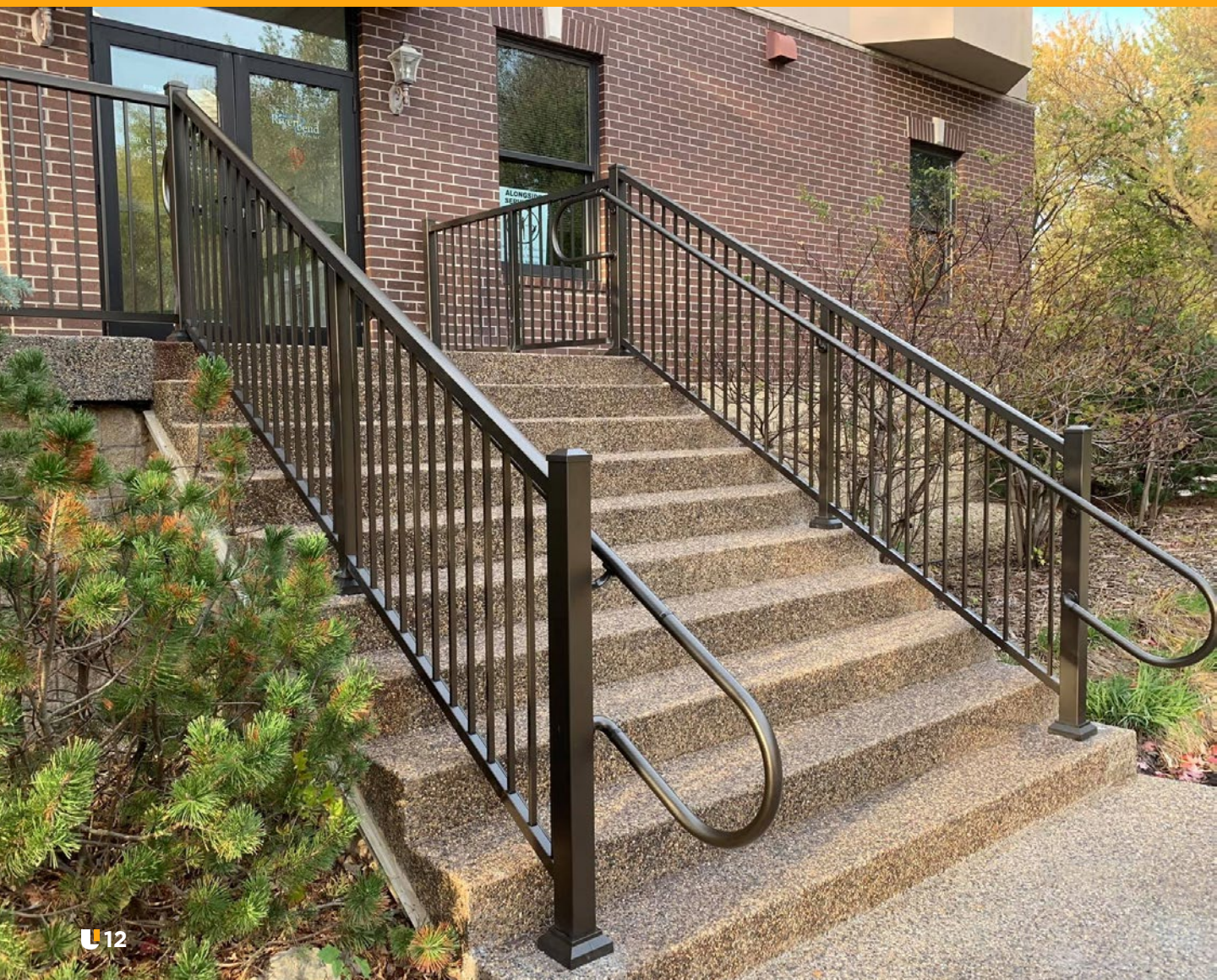
GLASS RAILING

NOTE:

1/4in and 7/16in Tempered Glass Panels NOT included. Top Rails sold separately. Glass panel system may not be used on stair applications.

ADA HANDRAIL

Our fully customizable ADA handrail can be installed on any commercial job, including stairs, ramps and horizontal installations.





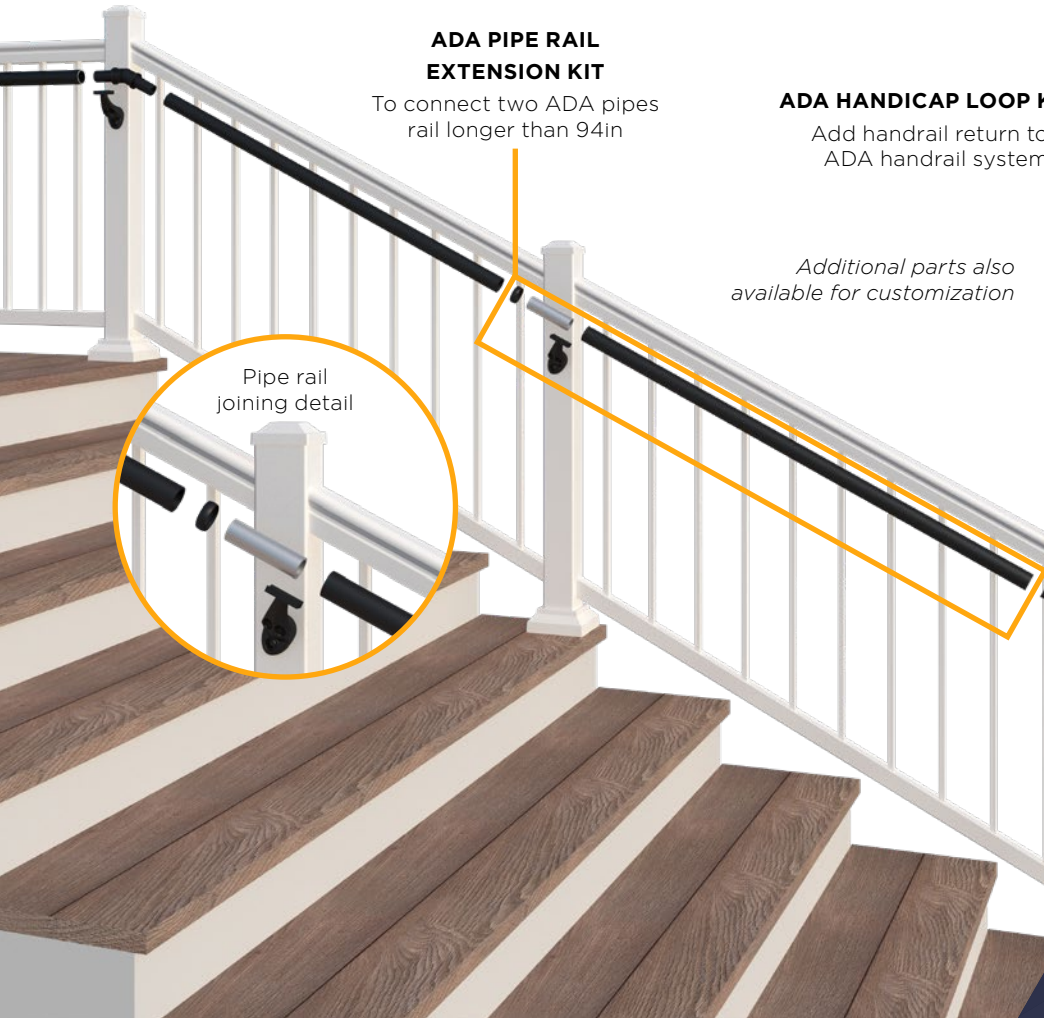
**ADA PIPE RAIL
AND 90° RETURN KIT**

For basic ADA system
less than 94in length



ADA 90° RETURN KIT

When pipe rail is cut
into two pieces



**ADA PIPE RAIL
EXTENSION KIT**

To connect two ADA pipes
rail longer than 94in



Pipe rail
joining detail

ADA HANDICAP LOOP KIT

Add handrail return to
ADA handrail system



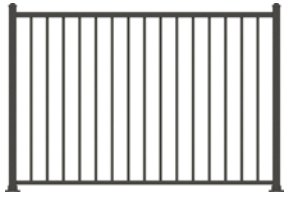
*Additional parts also
available for customization*



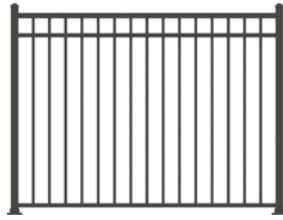
FENCING

Our fence line offers the durability and elegance people have come to expect from our baluster railing line. With a variety of sizes offered with 1/2in x 3/4in and 3/4in x 3/4in balusters, our fence is perfect for virtually all commercial and residential applications.

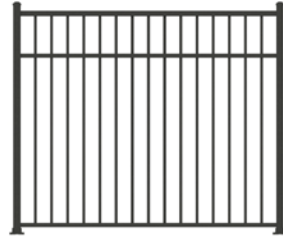




48IN FENCE HEIGHT



54IN FENCE HEIGHT



60IN FENCE HEIGHT

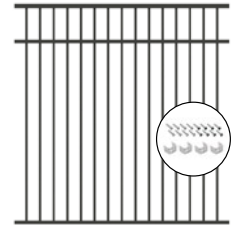
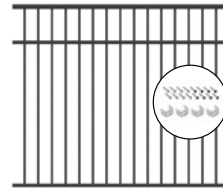
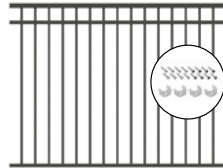
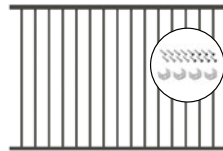


72IN FENCE HEIGHT

1/2in x 3/4in AND 3/4in x 3/4in FENCE SYSTEMS

Fence panel options:

- ◆ 48in, 54in, 60in and 72in Heights
- ◆ 6ft and 8ft Lengths



Fence post options:

- ◆ 3in Surface Post
- ◆ 3in Buried Post
- ◆ 2in Surface Post
- ◆ 2in Buried Post



Fence gate kits:

- ◆ 48in Fence Gate Kit
- ◆ 54in Fence Gate Kit



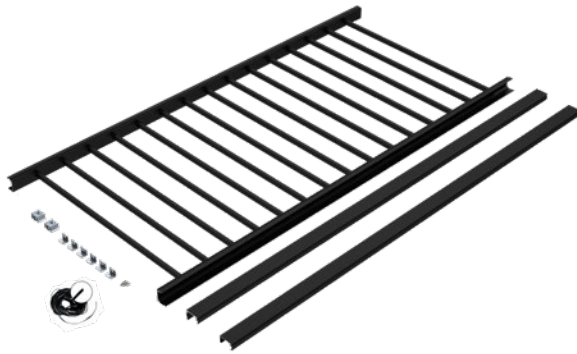
Some systems not available in all areas. Fence panel size options may vary. Contact your Sales Representative for current offering.

SCREEN RAIL

When searching for project's railing, choose a product that allows you to enjoy the outdoors while keeping those pesky bugs out. Our new screen rail will bring beauty, functionality and comfort to your projects, no matter the season.



CONVENIENT KITS



SCREEN RAIL PANEL ASSEMBLY



PERIMETER CHANNEL ASSEMBLY



SCREEN POST ASSEMBLY



SCREEN DOOR FRAME ASSEMBLY

SIZE OPTIONS AVAILABLE

Screen height options:

- ◆ 8.5ft
- ◆ 12ft

Screen length options:

- ◆ 6ft (69.43in actual size)
- ◆ 8ft (91.31in actual size)

Panel rail height options:

- ◆ 36in (33.5in actual size)
- ◆ 42in (39in actual size)

3/4in picket system is also available.

Contact a Sales Representative for all available sizes.

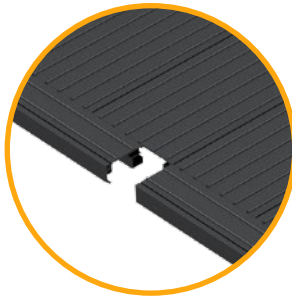
ALUMINUM FRAMING SYSTEM

Say goodbye to re-staining, warping and rotting on balconies and roof top amenities. Our aluminum framing system locks in place and lasts for years, giving you the security that your projects will withstand any environmental conditions.





HANGING BALCONY



**ALUMINUM
DECK BOARD**



ROOFTOP AMENITY

FEATURES & BENEFITS

- ◆ Patented system with **Pre-engineered Sections** for quick set up saves install time and money
- ◆ **Quick-Lock Technology** for rapid assembly and precise framing
- ◆ Use **Aluminum Decking or Pavers** for a Fire Proof System
- ◆ **Stronger & Safer** - 100 lbs. per sq. ft. exceeds most commercial codes
- ◆ **Longer and Lighter** - 31% longer spans and 40% lighter than treated lumber
- ◆ **Easy Installation** - less tools to install means quicker installation and even less to maintain
- ◆ **Regional Installation and Support** with monthly training sessions



Visit [Ultralox.com](https://www.ultralox.com) for full product lineup, technical data and resources.

 **(888) 685-4005**

 **2737 West Service Road
Eagan, MN 55121**