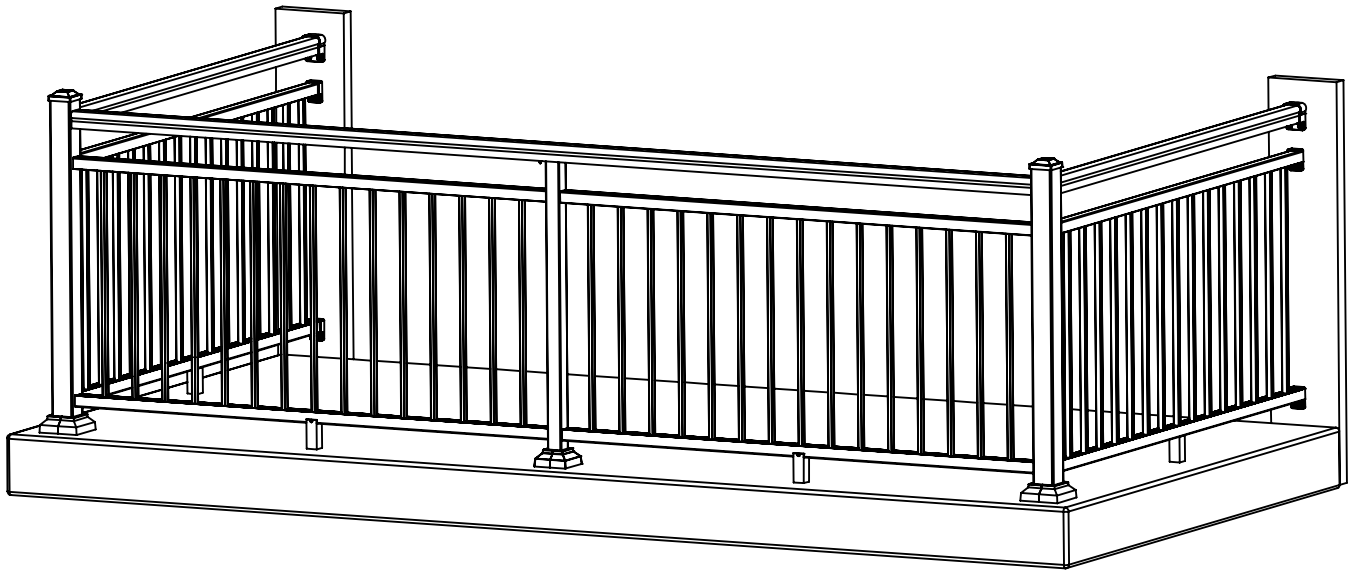
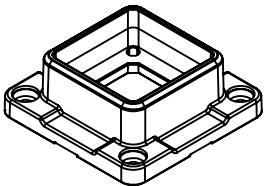


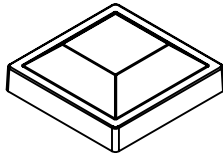
PICKET RAIL WITH OPEN MID-RAIL, 3" POSTS, 2" CENTER POST, WALL MOUNTED



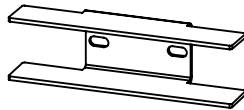
ISOMETRIC VIEW



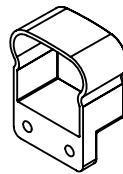
POST BASE
(PART NUMBER VARIES
BY SIZE)



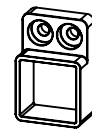
POST CAP
(PART NUMBER VARIES
BY SIZE)



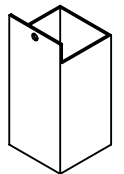
RAIL
CROSS-OVER CLIP
CL044104



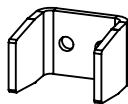
TOP RAIL
WALL MOUNT
(PART NUMBER VARIES
BY STYLE)



BOTTOM RAIL
WALL MOUNT
(PART NUMBER VARIES
BY STYLE)

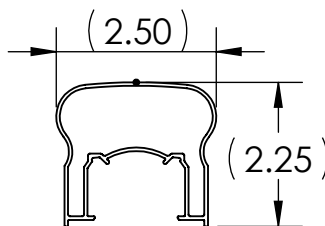


RAIL PANEL
SUPPORT LEG
(PART NUMBER VARIES
BY STYLE)



RAIL
PANEL CLIP
CL09410

PART REFERENCE



VICTORIAN
SERIES
VT393100

TOP RAIL PROFILE OPTIONS

PROPRIETARY AND CONFIDENTIAL

THE INFORMATION CONTAINED IN THIS DRAWING IS THE SOLE PROPERTY OF UltraLox.
ANY REPRODUCTION IN PART OR AS A WHOLE WITHOUT THE WRITTEN PERMISSION OF UltraLox IS NOT PERMITTED.

3" X 3" POST CAP

3" X 3" POST
42" OR 36"
LENGTHS

3" POST SKIRT

4X BASE MOUNTING SCREWS

3" POST BASE

4X POST MOUNTING SCREWS

MOUNTING STRUCTURE

3" POST DETAIL

CROSSOVER BRACKET

2" POST

2" BASE SKIRT

4X BASE MOUNTING SCREWS

2" POST BASE

4X POST MOUNTING SCREWS

MOUNTING STRUCTURE

2" POST DETAIL

2X WALL MOUNTING SCREWS
TOP RAIL WALL MOUNT

BOTTOM RAIL WALL MOUNT

MOUNTING STRUCTURE

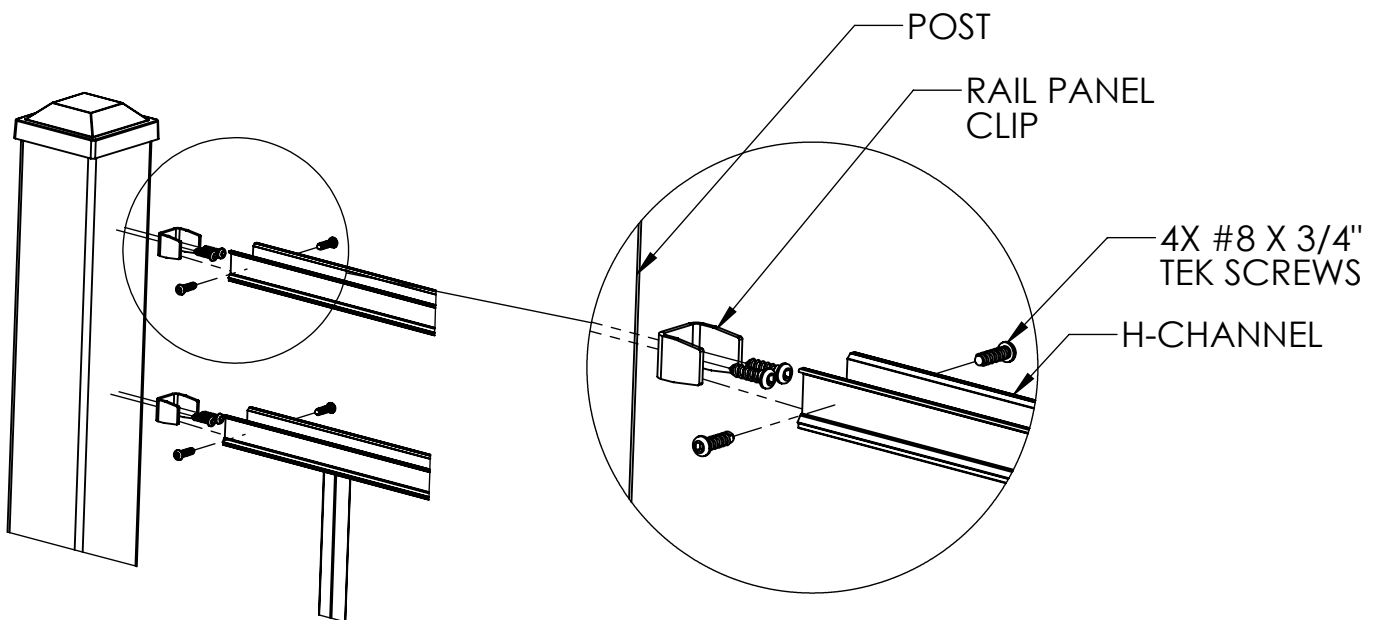
2X WALL MOUNTING SCREWS

BOTTOM RAIL WALL MOUNT

2X WALL MOUNTING SCREWS

RAIL PANEL

WALL MOUNT DETAIL



RAIL PANEL CLIP DETAIL